

# SMART Series 5MP 5X Active Deterrence PTZ Camera TP-MPND5MAV2



# TURING

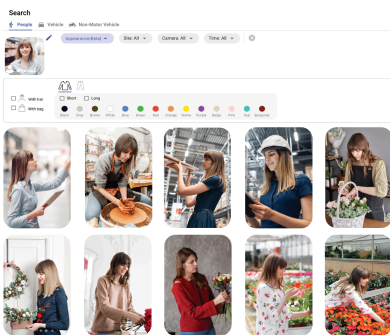
Experience intelligent, 5MP surveillance with the TP-MPND5MAV2 active deterrence PTZ. Its TwilightVision delivers superior low-light clarity, complemented by onboard analytics or auto-tracking for proactive monitoring

## KEY FEATURES

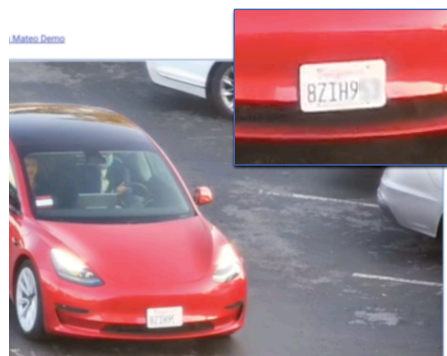
- 5MP 16:9 progress scan image sensor
- IR and warn light LED combo auto-switchable on-event
- Active deterrence with built-in speaker and warn light
- TwilightVision Technology with Superior low-light performance
- Auto tracking of people
- Connects to TURING VISION ® cloud VMS via Turing Smart Series NVR
- Wall mount bracket included, metal housing
- Up to 10-year extended warranty with CORE AI license
- NDAA compliant



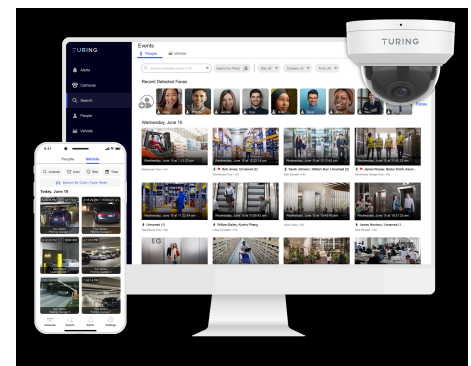
## EMPOWER VIDEO SECURITY WITH TURING VISION ® AND CORE AI



**People\* & vehicle attribute search**



**License plate detection and comparison**



**Customized smart alerts anywhere using Vision apps**

\*Activation depends on state regulations and the compliance with Biometric Information Protection Act (BIPA). Please refer to our privacy policy.

Visit [turing.ai/get-core](https://turing.ai/get-core) to find out more about CORE AI



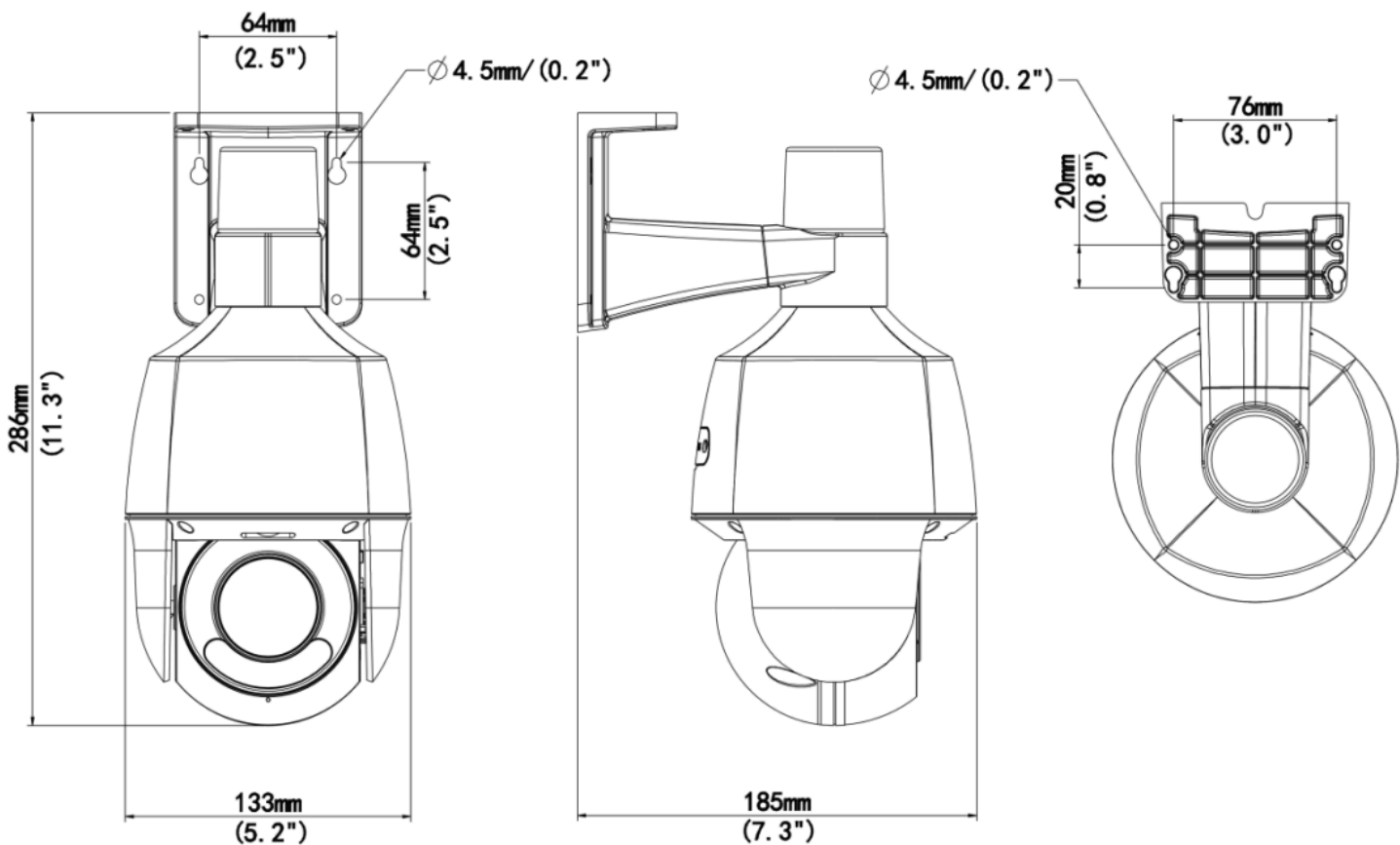


## SPECIFICATIONS

MODEL NUMBER		TP-MPND5MAV2
TURING VISION ® SUPPORT		
TURING VISION ® Cloud VMS	Included	
Prerequisites	Turing SMART Series NVR & bridge	
VIDEO & AUDIO		
Image sensor	1/2.7", 5.0 megapixel, progressive scan CMOS	
Lens	<b>Focal Length:</b> 2.7mm to 13.5mm @ F1.2 <b>Angle of view:</b> HHOV:106.9°~30.6°, VHOV:56°~17.7° DHOV:131.5°~36.1°	
Minimum Illumination	Color: 0.005Lux (F1.2, AGC ON); 0 Lux with IR in B&W night mode	
LED	<b>Smart IR Range:</b> Up to 50m (164 ft); <b>Warm Light:</b> Up to 15m (49.3 ft); <b>Wave Length:</b> 850nm	
Shutter	Auto/Manual, shutter time: 1~1/100000s	
Image Processing	<b>WDR:</b> 120 dB; <b>S/N:</b> >56dB; <b>Noise reduction:</b> 2D/3D; <b>Defog:</b> Digital Defog	
Video Encoding	Ultra 265, H.265, H.264 (Baseline profile, Main Profile, High Profile), MJPEG; <b>ROI</b>	
Available Resolution and Frame Rate	<b>Main Stream:</b> 5MP (2880*1620), 30fps Max <b>Sub Stream:</b> 720P (1280*720), 30fps Max; <b>Third Stream:</b> D1 (720*576) 30fps Max	
On-screen Overlay	<b>OSD:</b> Up to 8 OSD; <b>Privacy Mask:</b> 4 areas	
White Balance	Auto/Outdoor/Fine Tune/Sodium Lamp/Locked/Auto2	
Image Rotation	Normal/Flip Vertical/ Flip Horizontal/180°	
Audio I/O	1 input: impedance 1 kΩ, amplitude 2.5 V [p-p], 1 Output: impedance 600 Ω, amplitude 2.5 V [p-p]	
Alarm I/O	1 input, 1 output	
Audio Compression	G.711U, G.711A, 64 Kbps, 8KHz, audio suppression	
Onboard Storage	microSD slot (SD card not included); up to 512GB	
PTZ		
Pan	Pan degree: 0° ~ 345°; Speed: 1°/s~50°/s	
Tilt	Tilt degree: -10° ~ 100°; Speed: 1°/s~40°/s	
Preset and Patrol	1024 preset, 16 preset patrols	
Patrol Dwell Time	120 sec to 1800 sec	
Auto Tracking	Support; people only	
Event Handling		
DORI	<b>Detect:</b> 70.9m~247.5m(232.5ft~812ft); <b>Observe:</b> 28.4m~99m(93ft~324.8ft); <b>Recognize:</b> 14.2m~49.5m(46.5ft~162.4ft); <b>Identify:</b> 7.1m~24.8m(23.3.1ft~81.2ft)	
Event Type	<b>Basic:</b> motion detection, tampering alarm, audio detection; <b>Intelligent:</b> cross Line, intrusion and enter area with people, vehicle, and non-motor vehicle classifications	
NETWORK ACCESSIBILITY & SECURITY		
Protocols	IPv4, IGMP, ICMP, ARP, TCP, UDP, DHCP, PPPoE, RTP, RTSP, RTCP, DNS, DDNS, NTP, FTP, UPnP, HTTP, HTTPS, SMTP, 802.1x, SNMP, QoS, RTMP, SSH	
Compatible Integration	ONVIF (Profile S, Profile G, Profile T, Profile M), API, SDK	
User/Host	Up to 32 users. 3 user levels: administrator and common user	
Security	Password protection, Strong password, HTTPS encryption, Export operation logs, Basic and digest authentication for RTSP, Digest authentication for HTTP, TLS 1.2, WSSE and digest authentication for ONVIF	
Network	1 RJ45 10M/100M Base-TX Auto-adaptive Ethernet	
GENERAL		
EMC	CE-EMC (EN 55032: 2015+A1:2020, EN 61000-3-3: 2013+A1: 2019, EN IEC 61000-3-2: 2019+A1: 2021, EN 55035: 2017+A11:2020) FCC (FCC CFR 47 part15 B, ANSI C63.4-2014)	
Safety Certification	CE LVD (EN 62368-1); CB (IEC 62368-1); UL/CUL (UL 62368-1, CAN/CSA C22.2 No. 62368-1)	
Power	DC12V±25% 3A, PoE (IEEE 802.3at); Max. 21W; Surge Protection: 6KV	
Dimensions & Weight	185 x 133 x 286mm(7.3" x 5.2" x 11.3") (L x W x H), 1.32kg(2.91lb)	
Working Environment	-30°C ~ 60°C (-22°F ~ 140°F), Humidity: ≤95% RH (non-condensing)	
Storage Environment	-40°C ~ 70°C (-40°F ~ 158°F), Humidity: ≤95% RH (non-condensing)	
Reset Button	Supported	
Environmental Protection	Ingression protection: IP66; Vandal resistance:	

\*\*specifications subject to change without notice.

DIMENSIONS



MOUNTING ACCESSORIES

MODEL NUMBER	DESCRIPTION / APPLICATION	COMPATIBLE ACCESSORIES
TP-FCBJB	Junction Box	TP-WMCM - Corner mount TP-FCBPM - Pole mount