

alula™ RE926RX Wi-Fi Device Link Connect+™ Encrypted



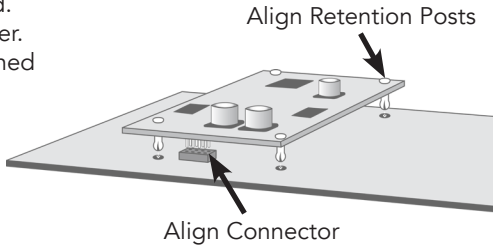
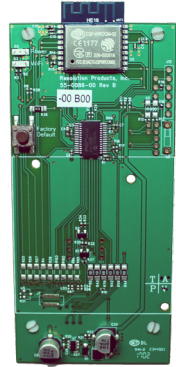
Wi-Fi DeviceLink is a dedicated Wi-Fi module that is used to connect Wi-Fi devices directly to the panel.

Features

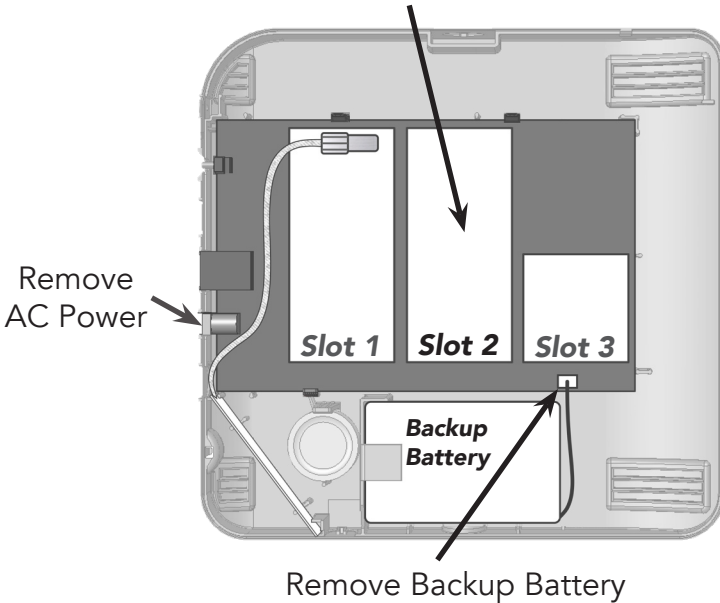
- Dedicated wireless connection to the panel
- Secure encrypted wireless communications
- 5-year warranty

Install by first disconnecting AC power on the panel. Next, remove the panel cover and disconnect the backup battery connector. Next, insert the Wi-Fi DeviceLink into **Slot 2** by carefully aligning the nylon retention posts and the 8-pin connector while pushing the card firmly until all posts are fully seated. Reconnect the backup battery and AC power. Finally, verify power and Wi-Fi LEDs are turned on, and then re-install the panel cover.

Configuration is automatic and no other setup is required.



Install Wi-Fi DeviceLink in Slot 2



Use the panel installation guide to verify proper system setup.

Specifications

Physical	
Dimensions	4.32 x 1.9 x 0.6 inches (centimeters)
Weight	0.7 ounces (20 grams)
Environmental	
Operating Temperature	32°F to 120°F (0°C to 49°C)
Maximum Humidity	85% non-condensing relative humidity
Module Specifications	
Frequency	2.4 GHz
Certification	
RE926RX	FCC, IC, CE, RCM

Specifications subject to change without notice

WARRANTY

Alula will replace non-portable products that are defective in their first five (5) years and all portable products that are defective in their first two (2) years.

TRADEMARKS

Alula and Connect+ are trademarks owned by Alula Holdings, LLC.

IC NOTICE

This device complies with Industry Canada license-exempt RSS standard(s). Operation is subject to the following two conditions:

- (1) This device may not cause interference, and
- (2) This device must accept any interference, including interference that may cause undesired operation of the device.

Le présent appareil est conforme aux cnr d'Industrie Canada applicables aux appareils radio exempts de licence. L'exploitation est autorisée aux deux conditions suivantes:

- (1) L'appareil ne doit pas produire de brouillage, et
- (2) L'utilisateur de l'appareil doit accepter tout brouillage radioélectrique subi, même si le brouillage est susceptible d'en compromettre le fonctionnement.

FCC NOTICE

This device complies with Part 15 of the FCC rules. Operation is subject to the following two conditions:

- (1) This device may not cause harmful interference.
- (2) This device must accept any interference that may be received, including interference that may cause undesired operation.

Changes or modifications not expressly approved by Alula could void the user's authority to operate this equipment.

CE DECLARATION OF CONFORMITY

Hereby, Alula declares that this RE926RX is in compliance with the essential requirements and other relevant provisions of directive 1999/5/EC.

(This declaration can be translated to other languages via a myriad of translation tools found on the Internet.)