



333 Bayview Avenue  
Amityville, New York 11701  
For Sales and Repairs, (800) 645-9445  
For Technical Service, (800) 645-9440  
Publicly traded on NASDAQ Symbol: NSSC



# GEMC-BSLC-1PT Single Point Expander INSTALLATION INSTRUCTIONS

WI1718 06/10

## GENERAL DESCRIPTION

The GEMC-BSLC-1PT is single-point expansion module. Terminals are provided for one supervised zone supporting normally-closed or normally-open contacts. Each expansion module has a unique factory-programmed code (printed on the label located on the rear case) that distinguishes itself to the receiver. (**Note:** See control-panel instructions for entering this

six-digit hexadecimal code into the panel; be sure to enter all numbers and/or letters, including leading zeros, if any).

## SPECIFICATIONS

### Electrical Ratings

**Input Power:** 13.6-16.3VDC, 2mA supplied by GEMC-BSLC control unit.

### Output Power:

Zone Loop Ratings: 16V, 0.31mA, 0.34mA short.

**Maximum Zone Loop Resistance:** 300Ω.

**Maximum Wiring Length:** 3000' (#16 AWG). Refer to GEMC-BSLC documentation (WI1648) for complete wiring information.

**Operating Temperature:** 32° to 120°F (0° to 49°C)

Refer to PCD-Windows Quickloader download software's calculation tools for 24V standby current calculation.

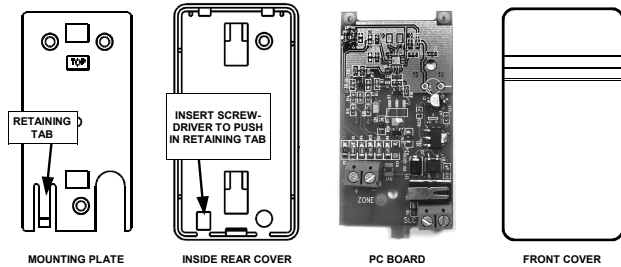


Fig. 1. GEMC-BSLC-1PT Expansion Module Component Parts

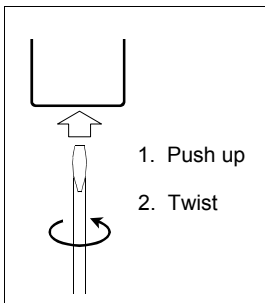


Fig. 2. Opening the case

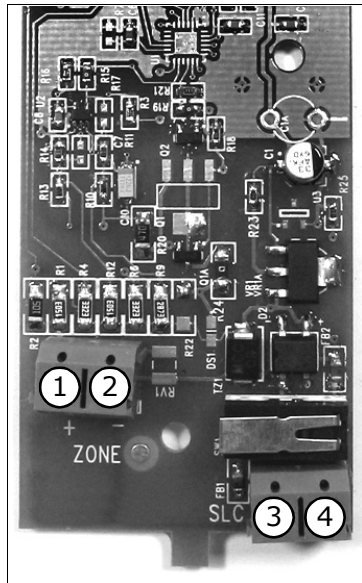


Fig. 3. Terminal Description:  
1 = Zone Input  
2 = Ground  
3 & 4 = SLC Loop

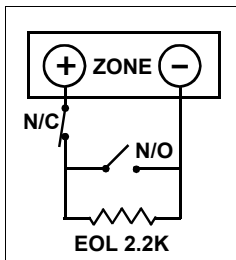


Fig. 4. Zone Wiring  
**Note:** UL installations require the use of the end-of-line resistor as shown in the above figure.

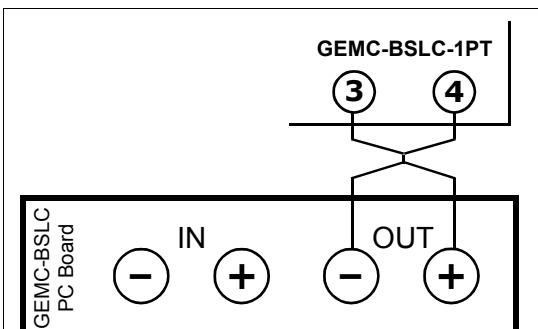


Fig. 5. Module Wiring

## INSTALLATION

**Note:** For reference purposes in this text, the point module will be considered oriented with the screw terminals at the bottom, as shown in these illustrations.

- Remove the cover.** Remove the GEMC-BSLC-1PT point module cover by inserting a small screwdriver into the slot at the bottom and twisting while applying upward pressure. See Fig. 2.
- Select point module location.**
- Remove point module mounting plate.** Use a small screwdriver to push in retaining tab (Fig. 1) and slide cover upward.
- Attach mounting plates.** **Note:** While use of the point module mounting plate is recommended, mounting holes in the rear case allow mounting without the plate. Use #6 flat-head screws to affix the mounting plate. Snap the point module into its mounting plate.
- Install contact or sensor.** Mount the external contact or sensor as described in its instructions. For recessed wiring, drill an access hole for the wire.
- Wire the terminals.** Connect two wires from an external sensor having normally-closed contacts (or a normally-closed loop) to Point-1 (Terminals 1–2). Wire terminals 3 and 4 to either end of the SLC loop (terminals 3 and 4 are not polarized).
- Close the point module case.** Close the case by engaging the hooks at the top, then snap the bottom together.
- Program the panel.** Enter (a) the zone number to which the point module will be mapped; (b) the 6-digit ID code with checksum digit. Refer to the programming instructions for the control panel and keypad in use.  
**Note:** In UL burglary installations, program the burglary alarm output for all protective devices.

# NAPCO LIMITED WARRANTY

NAPCO SECURITY SYSTEMS, INC. (NAPCO) warrants its products to be free from manufacturing defects in materials and workmanship for *thirty-six months* following the date of manufacture. NAPCO will, within said period, at its option, repair or replace any product failing to operate correctly without charge to the original purchaser or user.

This warranty shall not apply to any equipment, or any part thereof, which has been repaired by others, improperly installed, improperly used, abused, altered, damaged, subjected to acts of God, or on which any serial numbers have been altered, defaced or removed. Seller will not be responsible for any dismantling or reinstallation charges.

THERE ARE NO WARRANTIES, EXPRESS OR IMPLIED, WHICH EXTEND BEYOND THE DESCRIPTION ON THE FACE HEREOF. THERE IS NO EXPRESS OR IMPLIED WARRANTY OF MERCHANTABILITY OR A WARRANTY OF FITNESS FOR A PARTICULAR PURPOSE. ADDITIONALLY, THIS WARRANTY IS IN LIEU OF ALL OTHER OBLIGATIONS OR LIABILITIES ON THE PART OF NAPCO.

Any action for breach of warranty, including but not limited to any implied warranty of merchantability, must be brought within the six months following the end of the warranty period. IN NO CASE SHALL NAPCO BE LIABLE TO ANYONE FOR ANY CONSEQUENTIAL OR INCIDENTAL DAMAGES FOR BREACH OF THIS OR ANY OTHER WARRANTY, EXPRESS OR IMPLIED, EVEN IF THE LOSS OR DAMAGE IS CAUSED BY THE SELLER'S OWN NEGLIGENCE OR FAULT.

In case of defect, contact the security professional who installed and maintains your security system. In order to exercise the warranty, the product must be returned by the security professional, shipping costs prepaid and insured to NAPCO. After repair or replacement, NAPCO assumes the cost of returning products under warranty. NAPCO shall have no obligation under this warranty, or otherwise, if the product has been repaired by others, improperly installed, improperly used, abused, altered, damaged, subjected to accident, nuisance, flood, fire or acts of God, or on which any serial numbers have been altered, defaced or removed. NAPCO will not be responsible for any dismantling, reassembly or reinstallation charges.

This warranty contains the entire warranty. It is the sole warranty and any prior agreements or representations, whether oral or written, are either merged herein or are expressly cancelled. NAPCO neither assumes, nor authorizes any other person purporting to act on its

behalf to modify, to change, or to assume for it, any other warranty or liability concerning its products.

In no event shall NAPCO be liable for an amount in excess of NAPCO's original selling price of the product, for any loss or damage, whether direct, indirect, incidental, consequential, or otherwise arising out of any failure of the product. Seller's warranty, as hereinabove set forth, shall not be enlarged, diminished or affected by and no obligation or liability shall arise or grow out of Seller's rendering of technical advice or service in connection with Buyer's order of the goods furnished hereunder.


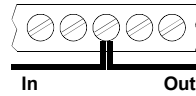
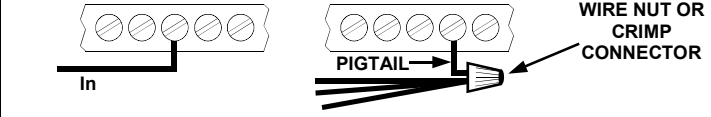
NAPCO RECOMMENDS THAT THE ENTIRE SYSTEM BE COMPLETELY TESTED WEEKLY.


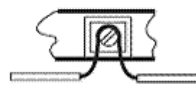
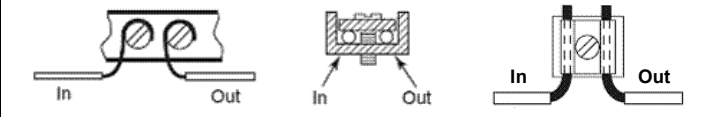
**Warning:** Despite frequent testing, and due to, but not limited to, any or all of the following; criminal tampering, electrical or communications disruption, it is possible for the system to fail to perform as expected. NAPCO does not represent that the product/system may not be compromised or circumvented; or that the product or system will prevent any personal injury or property loss by burglary, robbery, fire or otherwise; nor that the product or system will in all cases provide adequate warning or protection. A properly installed and maintained alarm may only reduce risk of burglary, robbery, fire or otherwise but it is not insurance or a guarantee that these events will not occur. CONSEQUENTLY, SELLER SHALL HAVE NO LIABILITY FOR ANY PERSONAL INJURY, PROPERTY DAMAGE, OR OTHER LOSS BASED ON A CLAIM THE PRODUCT FAILED TO GIVE WARNING. Therefore, the installer should in turn advise the consumer to take any and all precautions for his or her safety including, but not limited to, fleeing the premises and calling police or fire department, in order to mitigate the possibilities of harm and/or damage.

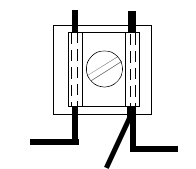
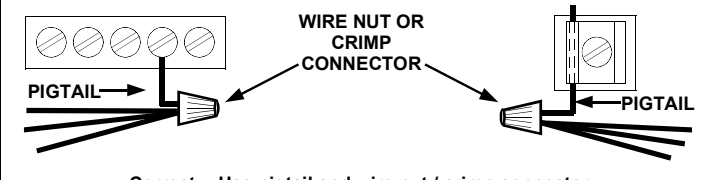
NAPCO is not an insurer of either the property or safety of the user's family or employees, and limits its liability for any loss or damage including incidental or consequential damages to NAPCO's original selling price of the product regardless of the cause of such loss or damage.

Some states do not allow limitations on how long an implied warranty lasts or do not allow the exclusion or limitation of incidental or consequential damages, or differentiate in their treatment of limitations of liability for ordinary or gross negligence, so the above limitations or exclusions may not apply to you. This Warranty gives you specific legal rights and you may also have other rights which vary from state to state.

## IMPORTANT WIRING METHODS

 <p><b>For single-conductor terminal blocks</b> (like the type shown at left), to terminate more than one conductor to a terminal, use the wiring methods shown at right:</p>	 <p>Incorrect</p>	 <p>Correct -- Single incoming and/or pigtail with wire nut / crimp connectors</p>
---	--	--

 <p><b>For "barrier" type terminal blocks</b> (like the type shown at left), to terminate two conductors to a terminal, use the wiring methods shown at right:</p>	 <p>Incorrect</p>	 <p>Correct -- Separate incoming and outgoing conductors</p>
--	--	--

<p><b>To terminate more than two conductors</b> or conductors of different wire sizes to a terminal, use the "pigtail" type wiring method as shown at right. Use insulated wire for the pigtail, and firmly secure the conductors to the pigtail using an appropriate wire nut or crimp connector for the number and gauge of conductors used.</p>	 <p>Incorrect</p>	 <p>Correct -- Use pigtail and wire nut / crimp connector</p>
--	--	---