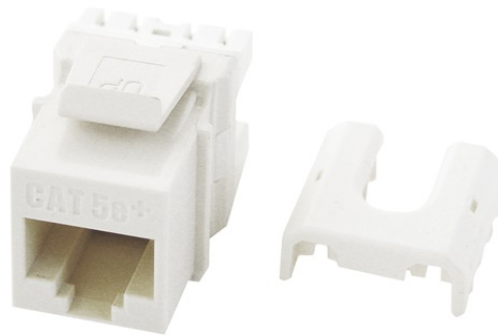


Cat 5e Quick Connect RJ45 Keystone Insert, White

WP3475-WH



features & benefits

- Easily terminate all four pairs using the Legrand Punch & Go Tool ([AC3400](#))
- RJ45 Inserts can be terminated with any 110 punchdown tool
- Exceeds EIA/TIA 568A/B Cat 5e Performance Specifications
- Available in Black, Brown, White, Light Almond, Grey, Blue, Orange, Ivory, Red
- Contractor packs available in quantities of 50. To order, use part number WP3475-WH-50

specifications

General Info

Color: White
Termination: 8P8C
Connection Type: RJ45 Female
Type: Keystone Insert

Assembly/Installation Information

Installation Tips: Terminate with Punch & Go Tool (AC3400)

Listing Agencies/Third Party Information

CSA Listing Info: CAN/CSA-C22.2 No. 182.4-1990
CSA Standard: Yes
UL Listing No: ANSI/UL 1863
UL Standard: Yes

UN SPS C: 39121704

Dimensions

Depth Metric: 30 mm
Depth U S: 1.18"
Height Metric: 22 mm
Height U S: .87"
Width Metric: 16.9 mm
Width U S: .665 in

Technical Information

Cat5 Cable Rating: Cat5e
Flammability Rating: UL 94V-0
Humidity: 93% Maximum Noncondensing
Material: High Impact Flame Retardant Plastic
Operating Temperature Celsius: -10°C to 60°C
Operating Temperature Fahrenheit: 14°F to 140°F
Performance Rating: Meets TIA/EIA-568-B.2-1 Cat.6 Short Link requirements
Product Fits Into: Keystone Cutout
Storage Temperature: -40°C to 70°C