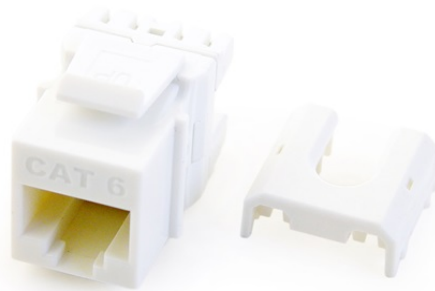


# Cat 6 Quick Connect RJ45 Keystone Insert, White

WP3476-WH



## features & benefits

- Easily terminate all four pairs using the Legrand Punch & Go Tool ([AC3400](#))
- RJ45 Inserts can be terminated with any 110 punchdown tool
- Exceeds EIA/TIA 568A/B Cat 6 Performance Specifications
- Available in Black, Brown, White, Light Almond, Grey, Blue, Orange
- Available in contractor packs

## specifications

### General Info

Cable Type: Cat 6  
Color: White  
finish: 50 microinches 24K Hard Gold over 70-100 microinches Nickel  
Pair Count: 4  
Termination: via Punchdown Tool  
Connection Type: 8P8C  
Type: Keystone Insert  
Housing Material: High Impact Flame Retardant Plastic  
Input Plug Type: RJ45 Male

### Listing Agencies/Third Party Information

CSA Listing Info: CAN/CSA-C22.2 No. 182.4-1990  
CSA Standard: Yes  
UL Listing No: ANSI/UL 1863  
UL Standard: Yes

UN SPS C: 39121704

### **Dimensions**

Depth Metric: 30 mm  
Depth U S: 1.18"  
Height Metric: 22 mm  
Height U S: .87"  
Width Metric: 16.9 mm  
Width U S: .665 in

### **Technical Information**

Flammability Rating: UL94-V0  
Humidity: Max Noncondensing 93%  
Material: Phosphor Bronze Alloy  
Mounting: Wallplate or Strap  
Ohm Value: Contact Resistance: Spring Wire - 20 milliohm max, IDC - 2.5 milliohm max  
Operating Temperature Celsius: -10°C to 60°C  
Operating Temperature Fahrenheit: 14°F to 140°F  
Storage Temperature: -40°C to 70°C  
Wire Gauge: 22 - 24 AWG  
Receptacle Type: RJ45 Female  
Number Of Receptacles: 1