

# Snap-N-Seal<sup>®</sup>

CABLE SERIES: 59 OR 6  
TOOLS: CPLCCT-SLM or SNSUTL  
TIP: LMTIP-S  
STRIP TOOLS: PSA59/6, CST596711  
TBPST, TBPST596

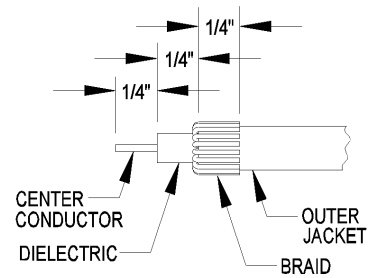
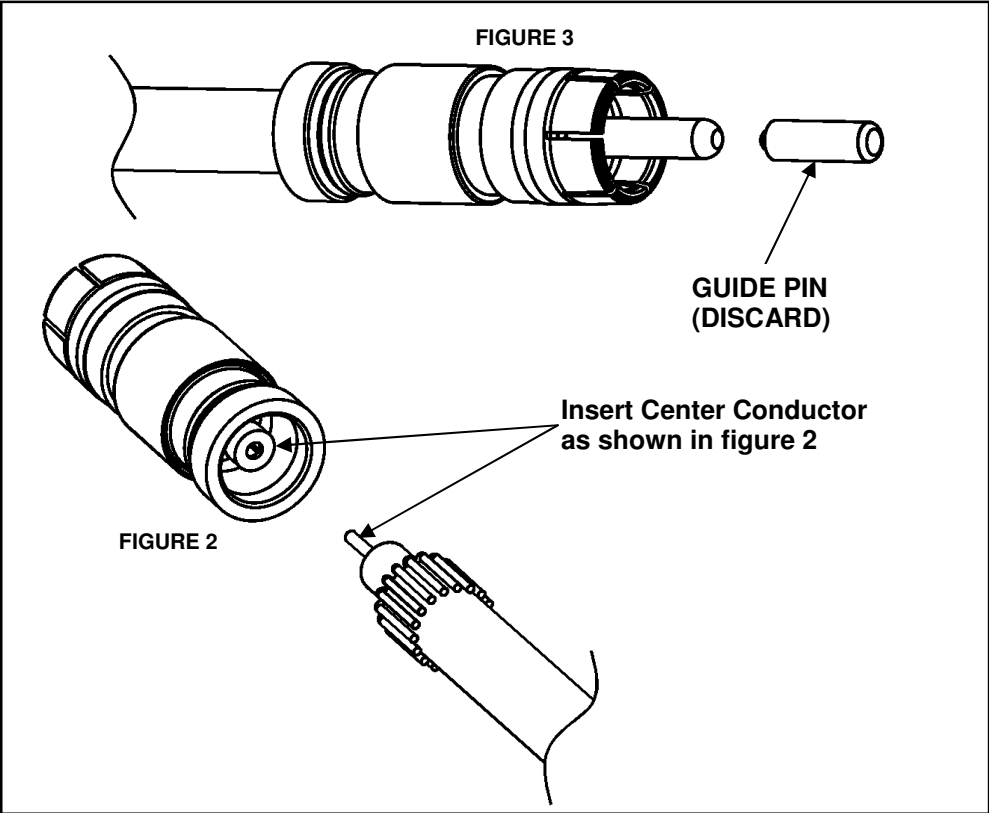


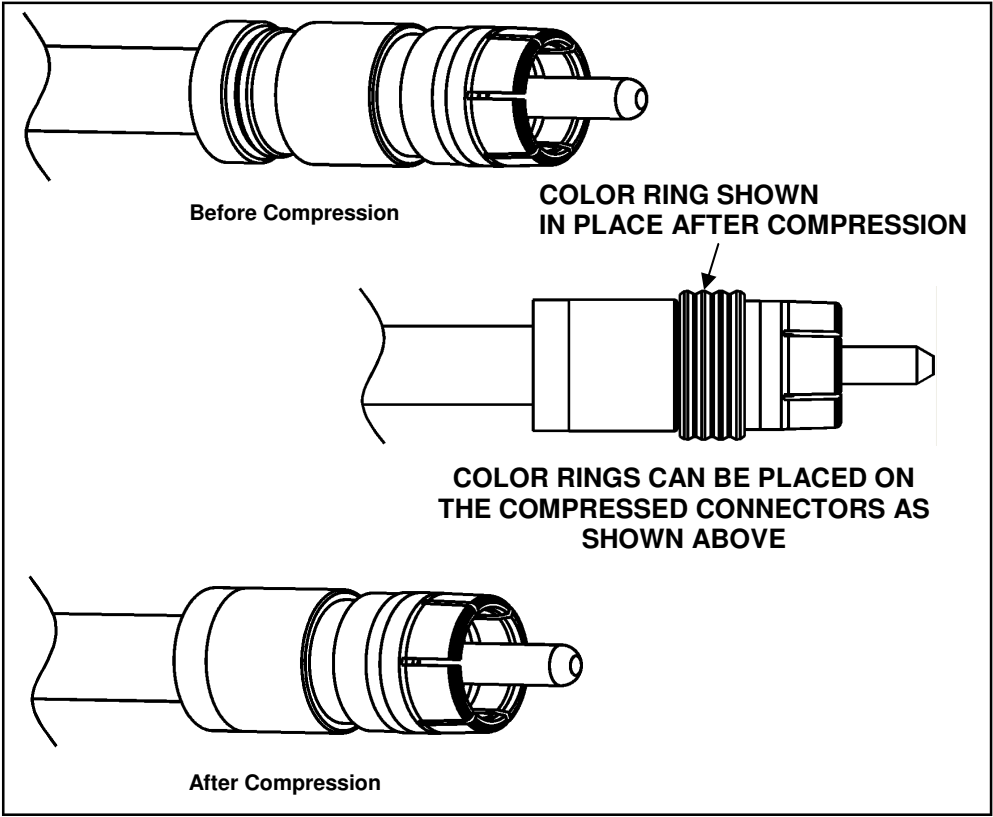
FIGURE 1

## RCA INSTALLATION INSTRUCTIONS

Use an industry standard 1/4" x 1/4" cable prep tool. Assure that braid is folded back onto the jacket as shown in figure 1.

Insert the prepared cable end into the connector. Push the center conductor into the pin until you feel it click and lock into place, see figure 2. Discard the guide pin after the cable has been installed.

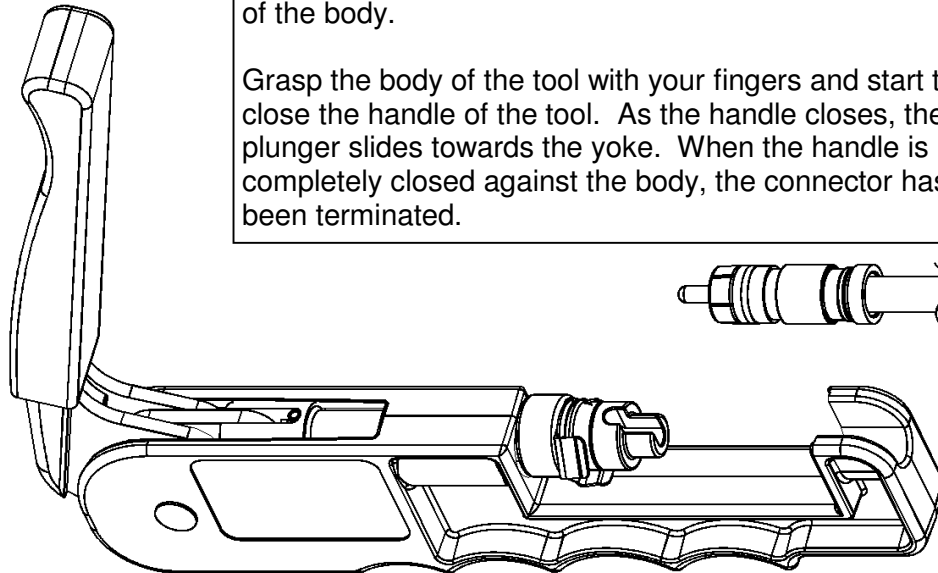




### CPLCCT-SLM Tool Instructions

Insert the appropriate tip into the BNC spring clip before inserting the RCA connector. Insert the tip so that the slot opening faces up. The tip can be stored on the bottom of the tool by screwing it in place on the underside of the body.

Grasp the body of the tool with your fingers and start to close the handle of the tool. As the handle closes, the plunger slides towards the yoke. When the handle is completely closed against the body, the connector has been terminated.



# SNSUTL Tool Instructions

