

## CX SERIES MAGNETIC LOCK ACCESSORIES

### DESCRIPTION

Camden offers a wide variety of mounting brackets and filler plates for CX Series magnetic locks. These accessories are able to support virtually any installation requirement, including mounting on glass doors.

### BRACKETS

#### ADJUSTABLE 'L' BRACKETS:

For use where the door frame does not provide an adequate mounting surface

##### CX-1001

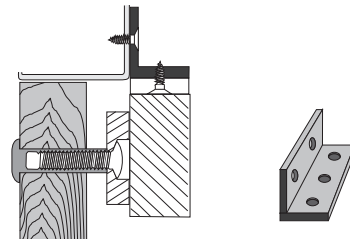
Compatible with:  
1200Lbs. Magnet

Dimensions:  
10 1/2" x 3" x 1 1/2"  
(267mm x 76mm x 38mm)

##### CX-1011

Compatible with:  
600Lbs. Magnet

Dimensions:  
9 13/16" x 1 15/16" x 1 1/8"  
(250mm x 49mm x 29mm)



#### SET OF 'L' & 'Z' BRACKETS:

For use on In-Swing Doors

##### CX-1002

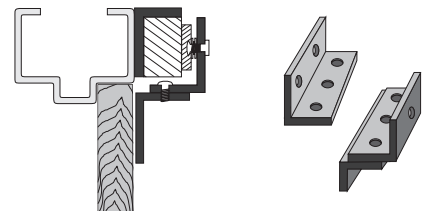
Compatible with:  
1200Lbs. Magnet

Dimensions:  
10 1/2" x 3" x 1 13/16"  
(267mm x 76mm x 46mm)  
6 5/16" x 2 1/2" x 2 1/2"  
(160mm x 64mm x 64mm)

##### CX-1012

Compatible with:  
600Lbs. Magnet

Dimensions:  
9 13/16" x 1 13/16" x 1 1/8"  
(250mm x 46mm x 29mm)  
6 3/16" x 2" x 2"  
(160mm x 51mm x 51mm)



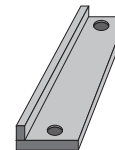
#### ANGLE BRACKET:

For use where the door frame does not provide an adequate mounting surface

##### CX-1003

Compatible with:  
1200 and 600Lbs. Magnet

Dimensions:  
10 1/2" x 1 1/2" x 1"  
(267mm x 38mm x 25mm)

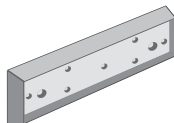


### ARMATURE HOUSING

##### CX-0001

Compatible with:  
1200Lbs. Magnet

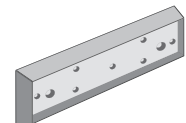
Dimensions:  
7 15/16" x 3" x 5/8"  
(202mm x 76mm x 16mm)



##### CX-0011

Compatible with:  
600Lbs. Magnet

Dimensions:  
7 15/16" x 2 3/16" x 5/8"  
(202mm x 56mm x 16mm)



## MOUNTING KITS

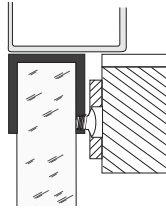
### GLASS DOOR MOUNTING KIT:

Use on 1/4" (6mm) - 1/2" (12mm) thick doors

#### CX-1013

**Compatible with:**  
1200 and 600Lbs. Magnet,

**Dimensions:**  
7 1/4" x 2 7/16" x 1 1/4"  
(184mm x 62mm x 32mm)



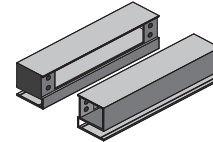
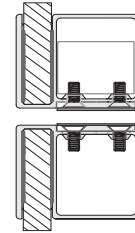
### SHEAR LOCK BRACKET:

For surface and glass mounting of CX-93M-12LS Shear Lock

#### CX-1015

**Compatible with:**  
1200Lbs. Shear Lock

**Dimensions:**  
7 3/8" x 2" x 1 11/16"  
(187mm x 50mm x 43mm)



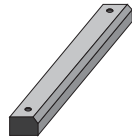
## SPACER BARS

Allows the maglock to be moved vertically on the door frame

### CX-AL004

**Compatible with:**  
1200 and 600Lbs. models  
5/8" (16mm) thick.

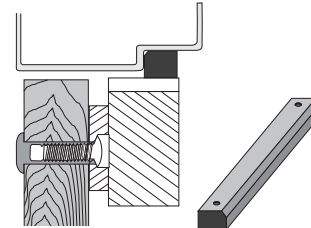
**Dimensions:**  
10 1/2" x 11/16" x 5/8"  
(267mm x 17mm x 16mm)



### CX-AL014

**Description:**  
1200 and 600Lbs. models  
1/2" (12.7mm) thick.

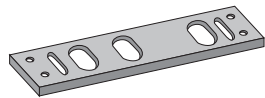
**Dimensions:**  
10 1/2" x 11/16" x 1/2"  
(267mm x 17mm x 12.7mm)



### CX-AL005

**Compatible with:**  
600Lbs. Magnet,  
3/8" (9.5mm) thick.

**Dimensions:**  
9 7/8" x 1" x 3/16"  
(251mm x 25mm x 5mm)



### CX-AL015

**Compatible with:**  
1200Lbs. Magnet,  
3/8" (9.5mm) thick

**Dimensions:**  
10 1/2" x 1 9/16" x 1/4"  
(267mm x 40mm x 6mm)

