

NS3502-8P-2T-2S Quick Installation Guide

1. Package Contents

Thank you for purchasing IFS L2+ Managed Gigabit/10 Gigabit Ethernet Switch.:

Model Name	Gigabit RJ45 Ports	Gigabit SFP Slots	PoE Ports	10G SFP+ Slots
NS3502-8P-2T-2S	2	2	8	-

“**Managed Switch**” is used as an alternative name in this Quick Installation Guide.

Open the box of the Managed Switch and carefully unpack it. The box should contain the following items:

- The Managed Switch
- Quick Installation Guide
- RJ45 to RS232 Cable
- Rubber Feet
- Two Rack-mounting Brackets with Attachment Screws
- Power Cord
- SFP Dust-proof Caps

If any item is found missing or damaged, please contact your local reseller for replacement.

2. Requirements

- Workstations running Windows XP/2003/Vista/7/8/2008, MAC OS X or later, Linux, UNIX, or other platforms are compatible with TCP/IP protocols.
- Workstations are installed with Ethernet NIC (Network Interface Card)

• Serial Port Connection (Terminal)

- The above Workstations come with COM Port (DB9) or USB-to-RS232 converter.
- The above Workstations have been installed with terminal emulator, such as Hyper Terminal included in Windows XP/2003.
- Serial cable -- one end is attached to the RS232 serial port, with the other end to the console port of the Managed Switch.

• Ethernet Port Connection

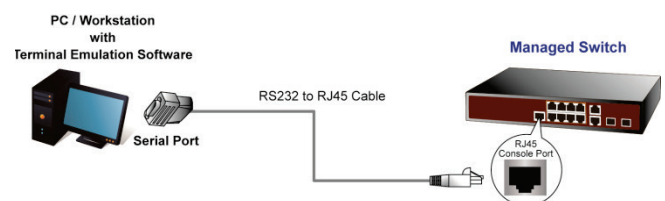
- Network cables -- Use standard network (UTP) cables with RJ45 connectors.
- The above PC is installed with Web browser and JAVA runtime environment plug-in.

Note: It is recommended to use Internet Explorer 8.0 or above to access the Managed Switch. If the Web interface of the Managed Switch is not accessible, please turn off the anti-virus software or firewall and then try it again.

3. Terminal Setup

To configure the system, connect a serial cable to a **COM port** on a PC or notebook computer and to RJ45 type of serial port of the Managed Switch.

Figure 3-1 Managed Switch Console Connectivity



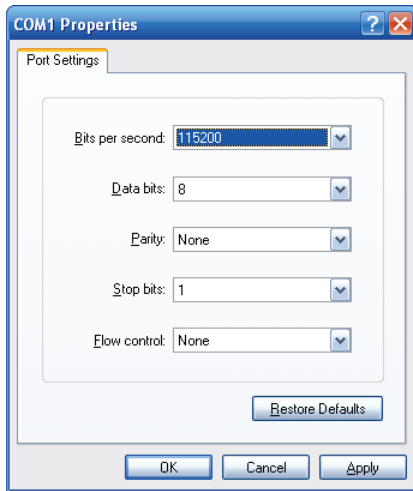
A terminal program is required to make the software connection to the Managed Switch.

1. Run terminal program on the OS.

- When the following screen appears, make sure that the COM port should be configured as:

- ◆ **Baud** : **115200**
- ◆ **Data bits** : **8**
- ◆ **Parity** : **None**
- ◆ **Stop bits** : **1**
- ◆ **Flow control** : **None**

Figure 3-2 COM Port Configuration



4. Logon to Console

Once the terminal is connected to the device, power on the Managed Switch. The terminal will display “running testing procedures”. Then the following message asks to log-in user name and password. The factory default user name and password are shown as follows and the login screen in Figure 4-1 appears.

```
Username: admin
Password: admin
```

Figure 4-1: Managed Switch Console Login Screen

```
Press: [ENTER] (to get started)
Username: admin
Password: admin
NS3502-8P-2T-2S # ■
```

The user can now enter commands to manage the Managed Switch. For a detailed description of the commands, please refer to the following chapters.

Note:

For security reason, please change and memorize the new password after this first setup.

Only accept command in lowercase letter under console interface.

5. Configuring IP Address

The Managed Switch is shipped with default IP address shown below.

```
IP Address: 192.168.0.100
Subnet Mask: 255.255.255.0
```

To check the current IP address or modify a new IP address for the Switch, please use the procedures as follows:

Show the current IP Address

- At the “#” prompt, enter “show ip interface brief”.
- The screen displays the current IP address as shown in Figure 5-1.

Figure 5-1: IP Information Screen

```
NS3502-8P-2T-2S # show ip interface brief
Vlan Address Method Status
1 192.168.0.100 Manual Up
NS3502-8P-2T-2S # ■
```

Configuring IP Address

- At the “#” prompt, enter the following command and press <Enter> as shown in Figure 5-2.

```
NS3502-8P # configure terminal
NS3502-8P (config) # interface vlan 1
NS3502-8P (config-if-vlan) # ip address 192.168.0.100
255.255.255.0
```

The previous command would apply the following settings for the Managed Switch.

```
IP Address: 192.168.0.100
Subnet Mask: 255.255.255.0
```

Figure 5-2: Configuring IP Address Screen

```
NS3502-8P-2T-2S # config terminal
NS3502-8P-2T-2S (config) # interface vlan 1
NS3502-8P-2T-2S (config-if-vlan) # ip address
192.168.0.100 255.255.255.0
NS3502-8P-2T-2S (config-if-vlan) # ■
```

- Repeat step 1 to check if the IP address is changed.

Store current switch configuration

- At the “#” prompt, enter the following command and press <Enter>.

```
# copy running-config startup-config
```

Figure 5-3: Saving Current Configuration Command Screen

```
NS3502-8P-2T-2S # copy running-config startup-
config
Building configuration . . .
% Saving 2936 bytes to flash:startup-config
NS3502-8P-2T-2S #
```

If the IP is successfully configured, the Managed Switch will apply the new IP address setting immediately. You can access the Web interface of the Managed Switch through the new IP address.

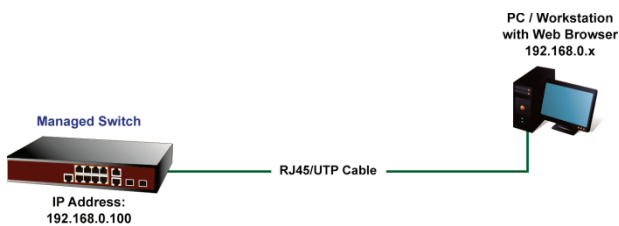
Note: If you are not familiar with the console command or the related parameter, enter “**help**” anytime in console to get the help description.

6. Starting Web Management

The following shows how to start up the **Web Management** of the Managed Switch. Note the Managed Switch is configured through an Ethernet connection. Please make sure that the manager PC must be set on the same **IP subnet address**.

For example, if the default IP address of the Managed Switch is **192.168.0.100**, then the manager PC should be set at **192.168.0.x** (where x is a number between 1 and 254, except 100), and the default subnet mask is 255.255.255.0.

Figure 6-1: IP Management Diagram

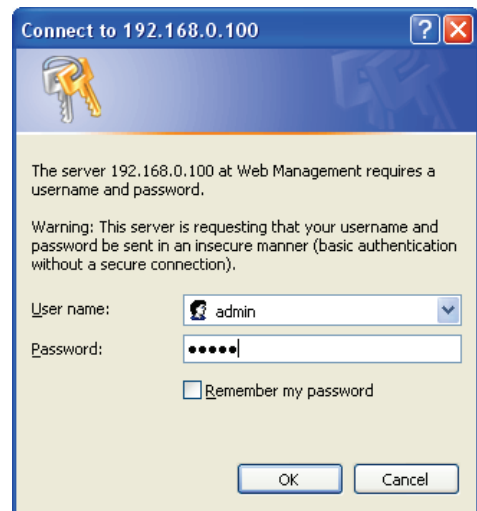


Logging in the Managed Switch

1. Use Internet Explorer 8.0 or above Web browser and enter IP address **http://192.168.0.100** (the factory default IP address or the one that you have just changed in console) to access the Web interface.
2. When the following dialog box appears, please enter the default user name and password “**admin**” (or the password you have changed via console). The login screen in Figure 6-2 appears.

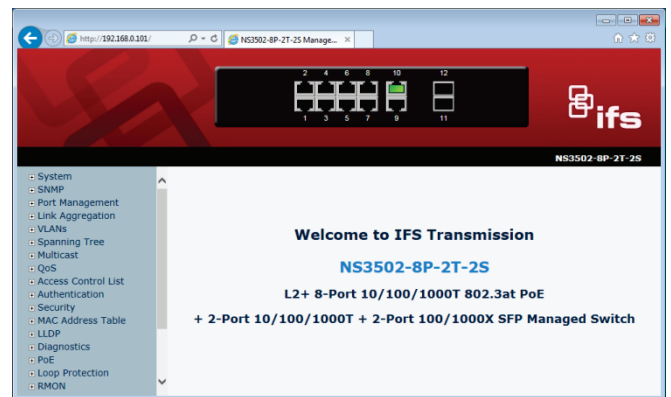
Default Username: **admin**
 Default Password: **admin**

Figure 6-2: Login Screen



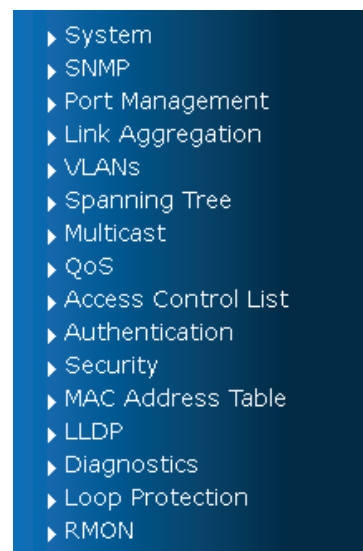
3. After entering the password, the main screen appears as Figure 6-3 shows.

Figure 6-3: Web Main Screen of Managed Switch



The Switch Menu on the left of the Web page lets you access all the commands and statistics the Managed Switch provides.

Figure 6-4: Switch Menu



Note: If you are not familiar with Switch functions or the related parameter, press “**Help icon**” anytime on the Web page to get the help description.

Now you can use the Web management interface to continue the Switch management or manage the Switch by console interface.

Please refer to the user’s manual for further information.

7. Saving Configuration

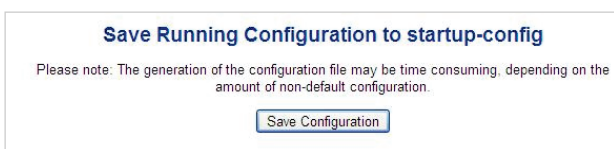
In the Managed Switch, the running configuration file stores in the RAM. In the current version, the running configuration sequence of running-config can be saved from the RAM to FLASH by executing save startup config command so that the running configuration sequence becomes the startup configuration file, which is called *configuration save*.

To save all applied changes and set the current configuration as a startup configuration, the startup-configuration file will be loaded automatically across a system reboot.

1. Click System, Save Startup Config.



2. Click the “**Save Configuration**” button.

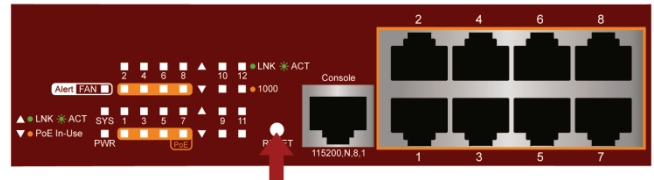


8. Recovering Back to Default Configuration

IP address has been changed or admin password has been forgotten –

To reset the IP address to the default IP address “**192.168.0.100**” or reset the login password to default value, press the hardware **reset button** on the rear panel for about **10 seconds**. After the device is rebooted, you can login the management Web interface within the same subnet of 192.168.0.xx.

Figure 8-1: NS3502-8P-2T-2S Reset Button



9. Customer Support

Thank you for purchasing IFS products. You can browse our online FAQ resource and User’s Manual on IFS Web site first to check if it could solve your issue. If you need more support information, please contact IFS switch support team.

Look under *Transmission*.

Contact information

For contact information, see www.utcfireandsecurity.com or www.utcfssecurityproducts.eu