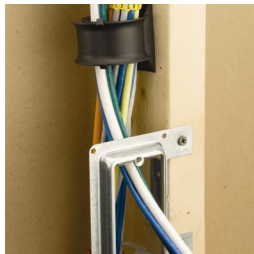
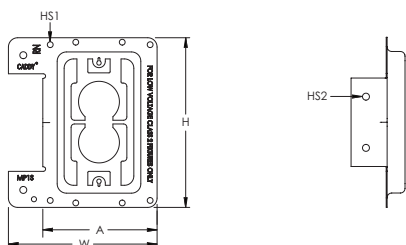


Low Voltage Mounting Plate for New Construction – MP1S



- Provides a bracket for mounting low voltage Class 2 communication outlets
- Reduces bulges in the dry wall caused by plaster rings
- May be installed to the front or the side of the metal or wood stud
- Side support provides for a rigid installation
- Attaches with self-tapping screws or nails
- Works with wood or metal studs



Part Number	MP1S
Material	Steel
Finish	Pregalvanized
Gang	1
Drywall Thickness	1/2" – 5/8"
Height (H)	4 1/2"
Width (W)	4"
A	2.667"
Hole Size 1 (HS1)	0.156"
Hole Size 2 (HS2)	0.187"
Certifications	cULus
Standard Packaging Quantity	25 pc
UPC	78285648660

No load rating, for positioning only.

UL, UR, cUL, cUR, cULus and cURus are registered certification marks of UL LLC.

WARNING

ERICO products shall be installed and used only as indicated in ERICO's product instruction sheets and training materials. Instruction sheets are available at www.erico.com and from your ERICO customer service representative. Improper installation, misuse, misapplication or other failure to completely follow ERICO's instructions and warnings may cause product malfunction, property damage, serious bodily injury and death.

Copyright © 2015 ERICO International Corporation. All rights reserved.

CADDY, CADWELD, CRITEC, ERICO, ERIFLEX, ERITECH, and LENTON are registered trademarks of ERICO International Corporation.

