






TruVision Stainless Steel PTZ Camera Installation Guide

P/N 1073420-EN • REV A • ISS 30JAN18

Copyright	© 2018 United Technologies Corporation, Interlogix is part of UTC Climate, Controls & Security, a unit of United Technologies Corporation. All rights reserved.
Trademarks and patents	Trade names used in this document may be trademarks or registered trademarks of the manufacturers or vendors of the respective products.
Manufacturer	Interlogix 2955 Red Hill Avenue, Costa Mesa, CA 92626-5923, USA Authorized EU manufacturing representative: UTC Fire & Security B.V. Kelvinstraat 7, 6003 DH Weert, The Netherlands
Certification	  
FCC compliance	Class A: This equipment has been tested and found to comply with the limits for a Class A digital device, pursuant to part 15 of the FCC Rules. These limits are designed to provide reasonable protection against harmful interference when the equipment is operated in a commercial environment. This equipment generates, uses, and can radiate radio frequency energy and, if not installed and used in accordance with the instruction manual, may cause harmful interference to radio communications. Operation of this equipment in a residential area is likely to cause harmful interference in which case the user will be required to correct the interference at his own expense.
FCC conditions	This device complies with Part 15 of the FCC Rules. Operation is subject to the following two conditions: (1) This device may not cause harmful interference. (2) This Device must accept any interference received, including interference that may cause undesired operation.
ACMA compliance	Notice! This is a Class A product. In a domestic environment this product may cause radio interference in which case the user may be required to take adequate measures.
Canada	This Class A digital apparatus complies with CAN ICES-003 (A)/NMB-3 (A). Cet appareil numérique de la classe A est conforme à la norme CAN ICES-003 (A)/NMB-3 (A).
European Union directives	This product and - if applicable - the supplied accessories too are marked with "CE" and comply therefore with the applicable harmonized European standards listed under the EMC Directive 2014/30/EU, the RoHS Directive 2011/65/EU.
 	2012/19/EU (WEEE directive): Products marked with this symbol cannot be disposed of as unsorted municipal waste in the European Union. For proper recycling, return this product to your local supplier upon the purchase of equivalent new equipment, or dispose of it at designated collection points. For more information see: www.recyclethis.info .

**Product
warnings
and
disclaimers**

THESE PRODUCTS ARE INTENDED FOR SALE TO, AND INSTALLATION BY, AN EXPERIENCED SECURITY PROFESSIONAL. UTC FIRE & SECURITY CANNOT PROVIDE ANY ASSURANCE THAT ANY PERSON OR ENTITY BUYING ITS PRODUCTS, INCLUDING ANY "AUTHORIZED DEALER", IS PROPERLY TRAINED OR EXPERIENCED TO CORRECTLY INSTALL SECURITY RELATED PRODUCTS.

For more information on warranty disclaimers and product safety information, please check www.firesecurityproducts.com/policy/product-warning/ or scan the following code:



**Contact
information
and manuals**

For contact information go to: www.interlogix.com or www.firesecurityproducts.com

To get translations for this and other product manuals go to: www.firesecurityproducts.com

Content

Introduction 6

Product overview 6

Installation 6

Installation environment 6

Package contents 7

Camera description 10

Alarm input and output connections 11

SD memory card installation 11

Mounting the PTZ dome camera 12

Mounting the junction box 13

Using the camera with an Interlogix NVR or Hybrid DVR or
another system 15

Using the camera with TruVision Navigator 16

Access the camera over the internet 16

Specifications 19

PTZ camera 19

PTZ camera junction box 19

Pin definitions 20

Introduction

Product overview

This is the installation guide for the TruVision Stainless Steel PTZ dome camera model:

- TVP-5201 (2MPX wall-mount PTZ dome camera, 23X)

Installation

This section provides information on how to install the cameras.

Installation environment

When installing your product, consider these factors:

- **Electrical:** Install electrical wiring carefully. It should be done by qualified service personnel. Always use a proper PoE switch or a 24 VDC UL listed Class 2 or CE certified power supply to power the camera. Do not overload the power cord or adapter.
- **Ventilation:** Ensure that the location planned for the installation of the camera is well ventilated.
- **Temperature:** Do not operate the camera beyond the specified temperature, humidity, or power source ratings. The operating temperature of the camera is between -40 to 60°C (-40 to 140°F). Humidity is below 90%.
- **Moisture:** Do not expose the camera to rain or moisture or try to operate it in wet areas. Turn the power off immediately if the camera is wet and ask a qualified

service person for servicing. Moisture can damage the camera and also create the danger of electric shock.

- **Servicing:** Do not attempt to service this camera yourself. Any attempt to dismantle or remove the covers from this product will invalidate the warranty and may also result in serious injury. Refer all servicing to qualified service personnel.
- **Cleaning:** Do not touch the sensor modules with fingers. If cleaning is necessary, use a clean cloth with some ethanol and wipe the camera gently. If the camera will not be used for an extended period of time, put on the lens cap to protect the sensors from dirt.

Package contents

Check the package and contents for visible damage. If any components are damaged or missing, do not attempt to use the unit; contact the supplier immediately. If the unit is returned, it must be shipped back in its original packaging.

Package contents include the following:

Camera



Installation manual



CD with configuration manual
and TruVision Device
Manager



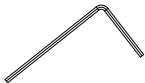
Equipment disposal sheet



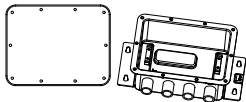
Battery disposal sheet



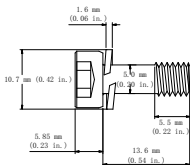
Hex wrench



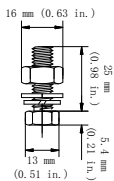
Junction box



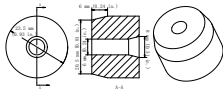
Screw A (10 pcs.)



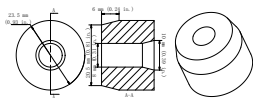
Screw B (4 pcs.)



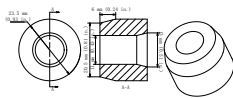
Blue sealing plug (3 pcs.)



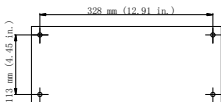
White sealing plug (3 pcs)



Black sealing plug (3 pcs)



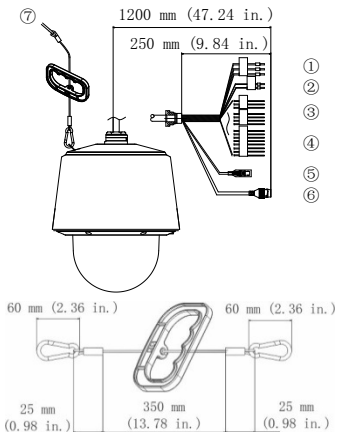
Drill template – junction box



CAUTION: Use direct plug-in UL listed power supplies marked Class 2/CE certified or LPS (limited power source) of the required output rating as listed on the unit.

Camera description

Figure 1: PTZ camera description and connectors

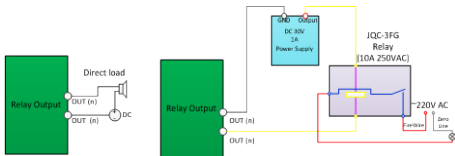


1. 24V power supply (red 24 VAC, yellow_green ground, black 24 VAC)
2. RS-485 (Orange RS-485+, Yellow RS-485-)
3. Audio in (red_white) / Audio output (blue_white)
4. Alarm inputs (green, blue, purple, gray, white, black_white, brown_white) / two alarm outputs (red, pink)
5. 960H analog output
6. RJ45 network cable
7. Safety lanyard

Alarm input and output connections

The alarm output can be used to turn on and off an external alarm device. Connect a 30 VDC/1A external power supply to the alarm output. If using an AC power supply, an external relay must be used to prevent electric shock and damage to the device. See Figure 2 below.

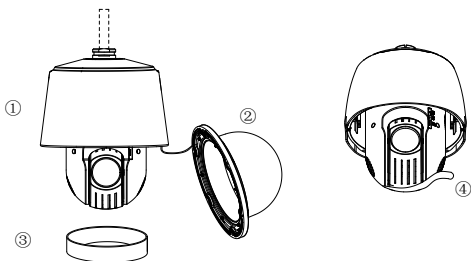
Figure 2: External alarm output



SD memory card installation

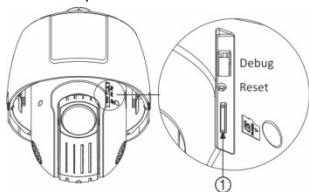
To install the SD memory card in the PTZ dome

1. Loosen the six hex screws on the bubble assembly.
Note: Do not remove the hex screws from the bubble assembly. Loosen them enough to remove the bubble.
2. Carefully pull down the bubble assembly (2) to separate it from the top enclosure (1), and remove the thin foam shipping ring (3), and tape (4).



Note: Remove the thin foam shipping ring prior to completing the installation.

3. *Optional:* Insert the memory card into the SD card slot (1) until it clicks into place.



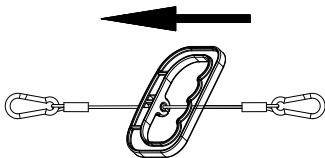
4. Reinstall the bubble assembly on the camera housing.

Mounting the PTZ dome camera

The TruVision Stainless Steel PTZ Wall Bracket (TVP-WBS, not included) is required to wall-mount the PTZ camera, and the TruVision Stainless Steel Pendant Bracket (TVP-PAS, not included) is required to mount the PTZ camera to a ceiling.

Refer to the installation guides provided with the TVP-WBS and TVP-PAS mounting kits for instructions on mounting the stainless steel PTZ camera to the wall or ceiling.

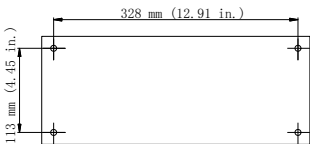
After completing the PTZ camera installation, you can remove the safety lanyard handle. See the image below.



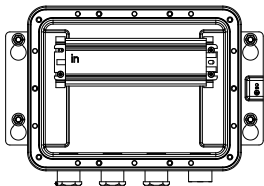
Mounting the junction box

To mount the PTZ camera junction box:

1. Drill mounting holes in the mounting surface according to the supplied drill template. Insert the four screw Bs in the mounting surface, and partially tighten down the four mounting screws.



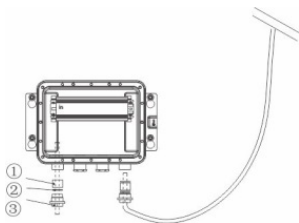
2. Remove the cover of the junction box and align the four slotted mounting holes on the junction box with the mounting hardware. Secure the junction box to the mounting surface.



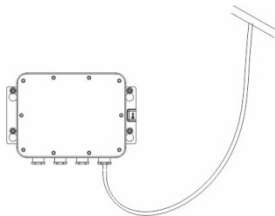
3. Route the camera cable harness through the cable access hole on the junction box and tighten the waterproof nut.

Note: Insert the PoE cable or BNC cable first, followed by the RS-485 wires, audio input and output wires, alarm input and output wires, and power supply wires. For the power supply wires, the red plastic interface must first be removed.

4. If the other three cable access holes are used, unscrew the hex bolt and remove the pre-installed black solid sealing plug.
5. Choose the applicable sealing plug from the white, blue, and black sealing plugs according to the diameter of the cable.
6. Route the cable through the sealing plug (1), flat washer (2) and the hex bolt (3) and tighten to maintain IP67 rating.



7. Connect the wires inside the junction box and attach the cover of the junction box with the screw As.



Using the camera with an Interlogix NVR or Hybrid DVR or another system

Please refer to the NVR/DVR user manuals for instructions on connecting and operating the camera with these systems.

Using the camera with TruVision Navigator

The camera can be connected to an Interlogix NVR, hybrid DVR, or directly to TruVision Navigator. Please refer to the user manual of TruVision Navigator and/or of the NVR or hybrid DVR for instructions.

Access the camera over the internet

Use the web browser to access and control the camera over the internet.

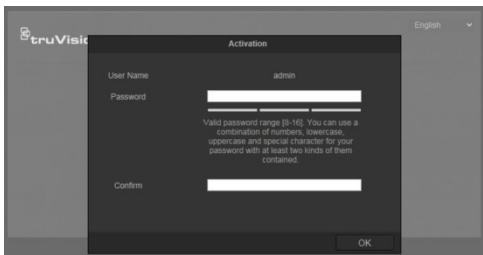
Note: Any changes made to the camera's configuration only apply to this camera. Only authorized users should be able to modify camera settings.

When you first start up the camera, the Activation window appears. You must define a high-security admin password before accessing the camera. There is no default password provided.

You can activate a password via a web browser and via TruVision Device Manager (included on the CD to find the IP address of the camera).

To activate the camera via the web browser:

1. Power on the camera and connect the camera to the network.
2. Type the IP address into the address bar of the web browser and press Enter to enter the activation interface.



Note:

- The default IP address of the camera is 192.168.1.70.
- For the camera to enable DHCP by default, you must activate the camera via TruVision Device Manager. Please refer to the following section, “To activate the camera via TruVision Device Manager.”

3. Type the password in the **Password** field.

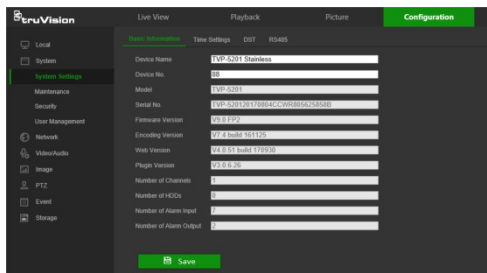
Note: A valid password range must be between 8 and 16 characters. You can use a combination of numbers, lower and upper case letters, and special characters : _ - , . * & @ / \$? Space. The password must contain characters from at least two of these groups. We also recommend that you reset your password regularly. For high security systems, it is particularly recommended to reset the password monthly or weekly for better protection.

4. Confirm the password.

5. Click **OK** to save the password and enter the live view interface.

- Click the **Configuration** tab on the top of the screen and select the parameter to change.

Figure 3: Example of a configuration window



To activate the camera via TruVision Device Manager:

For instructions on how to activate the camera using TruVision Device Manager, refer to the *TruVision Device Manager User Manual*. Go to www.interlogix.com/video/product/truvision-device-manager and click **Downloads**.

Specifications

PTZ camera

Electrical

Voltage input	24 VAC, Hi-PoE
---------------	----------------

Power consumption	Max. 60 W
-------------------	-----------

Miscellaneous

Connectors	24 VAC, Alarm In/Out, RS-485, Ethernet RJ45 connector, Audio in/output, CVBS (960H) Output
------------	--

Operating temperature	-40 to +65°C (-40 to +149°F)
-----------------------	------------------------------

Dimensions	262 × 330 mm (10.3 × 13.0 in.)
------------	--------------------------------

Weight	10 kg (22 lb.)
--------	----------------

Environmental rating	IP67, IK10
----------------------	------------

PTZ camera junction box

Dimensions	364 × 256 × 111.5 mm (14.33 × 10.08 × 4.39 in.)
------------	--

Weight	4.8 kg (10.58 lb.)
--------	--------------------

Pin definitions

There are eight wires on a standard UTP/STP cable and each wire is color-coded. The following shows the pin allocation and color of straight and crossover cable connection:

Figure 4: Straight-through cable

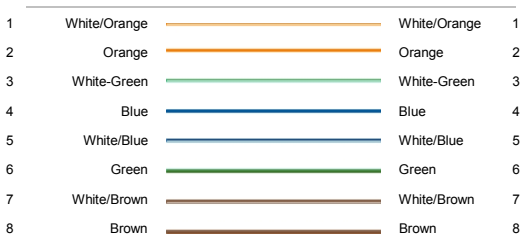
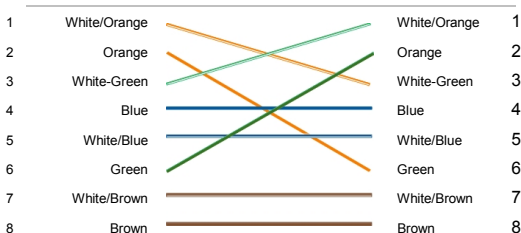


Figure 5: Cross-over cable



Please make sure your connected cables have the same pin assignment and color as above before deploying the cables in your network.