

# HD Video Surveillance Made Easy.™

## **Blackjack® X-RACK**

Servers Powered by DW Spectrum® IPVMS



## Blackjack® X-Rack™ plus Blackjack® NAS



# Blackjack® X-RACK

Servers Powered by DW Spectrum® IPVMS

## More Cameras. More Recording. Remote Monitoring.



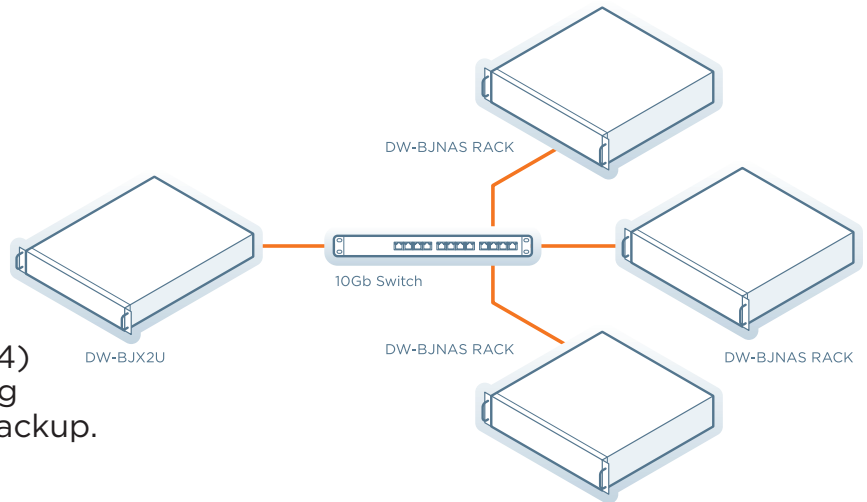
DW-BJX2U

By moving local storage to a dedicated NAS unit, the Blackjack® X-Rack™ server can outperform any competing model.



### Connect to up to 4 Blackjack® NAS devices

Blackjack® X-Rack™ servers are designed to connect up to four (4) Blackjack® NAS devices, providing up to 560TB for recording and backup.



### Features:

**560TB**  
560TB NAS  
Storage Options

**200**   
Manage up to  
200 IP Cameras

**HD**  
HD Output

**2x**   
Two NIC Cards

  
Hot-Swappable  
SSD

**5 YEAR**  
Warranty

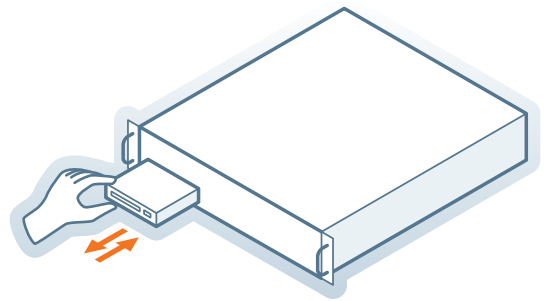
- Supports all ONVIF conformant IP cameras
- Storage options with Blackjack® NAS™ Rack with up to 560TB Storage
- OS on hot swappable SSD bays with lock, RAID1
- Redundant power supply
- Record and manage single- and multi-sensor IP cameras of any resolution up to 200 2.1MP cameras at 30fps and a maximum of 1200Mbps throughput
- True HD and DVI local monitoring output ports
- Dual 10GB network ports
- Windows Server 2016® OS on mirrored SSD drives
- USB interface
- Hosting DW Spectrum® IPVMS for setup, configuration, and monitoring
- Two (2) 4-channel licenses included for a total of 8 recording channels (DW-SPECTRUMLSC004), fully transferable between cameras and encoders
- No annual maintenance fees
- Simple enterprise scalability
- Auto device discovery
- Dual stream recording
- Rail kit included
- USB mouse and keyboard included
- Designed, assembled and tested in the U.S.A.
- 5 year warranty





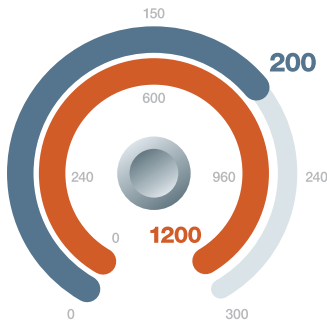
## Hot-Swappable SSDs

When a drive needs to be replaced, you can easily hot-swap it with a new one, while the system is still running. There is no need to power down and lose important minutes of data to maintain your system's drives healthy and operating.



## Max throughput and IP camera support

The Blackjack® X-Rack™ records and manages single- and multi-sensor IP cameras of any resolution up to 200 2.1MP/1080p cameras at 30fps and a maximum of 1200Mbps throughput.

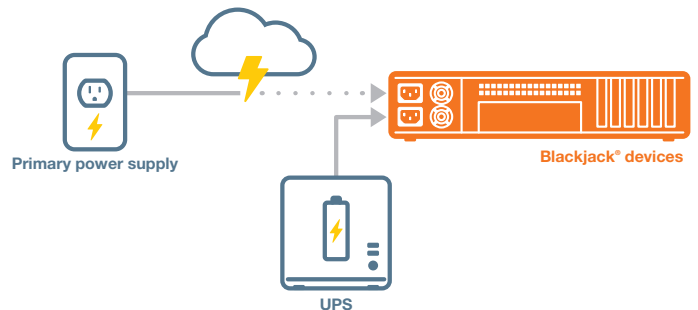


**Blackjack X-Rack**  
200 IP Cameras  
1200Mbps Throughput



## Dual power supply

Dual power supply provides redundancy for network reliability.



## DW Spectrum® IPVMS

DW Spectrum® IPVMS is an endlessly customizable IP Video Management platform that gives users the ability to create tailored network video solutions for any type of project, from the office or on in the field.



## Remote monitoring via Blackjack® Client™

Combine the Blackjack® X-Rack™ with the Blackjack® Client™ appliance for powerful remote monitoring of your system.



\* On supported models

# Specifications:

Description		Specifications
Maximum IP cameras		200 (2.1MP/1080p @30fps, with high recording quality)
Included IP licenses		8
Form factor		2U rack mount
Operating system		Windows Server 2016®
	OS on SSD	2x SSD (RAID1 mirrored), hot-swappable bays with lock
CPU		Intel Xeon® Processor with 8 Cores
Memory		32GB DDR4 ECC
		Option: DW-MEM32GX - 32GB(2x 16GB) memory upgrade Kit*
Ethernet port		2 x 10Gigabit Ethernet (RJ45)**
		Option: DW-R10NIC - secondary 10Gbps RJ45 port*
System	Max video storage rate (Mbps)	1200Mbps**
Storage	Max. DW-BJNAS RACK connection	4 (up to 560TB)
Video-out	Outputs	True HD and DVI output***
	Resolution	HD 1080p
Pre-loaded VMS software		DW Spectrum® IPVMS Server
Remote clients		Cross platform - Windows®, Linux Ubuntu® and Mac®
Mobile apps		iOS® and Android®
Keyboard and mouse		Included
Rail kit		Included (4 post static)
Power supply		Dual 380W Redundant****
Operating temperature (ambient room temperature)		50°F-80°F (10°C-27°C)
Operating humidity		20-60% RH
Dimension (WxDxH)		17.29" x 21.93" x 3.46" (439.3 x 557.1 x 88 mm)
Warranty		5 year

\* Available at initial order only  
 \*\* Require 10Gb network switch  
 \*\*\* Should be used for initial configuration and server management  
 \*\*\*\* A separate UPS for each power supply is recommended

## Network Attached Storage

# Blackjack® NAS

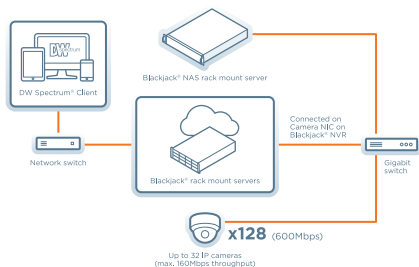
Network Attached Storage

Blackjack® NAS™ rackmount or desktop models integrate seamlessly into a DW Spectrum® IPVMS system. The desktop models support a MEGApix® CaaS™ system with up to 12 edge camera-servers.

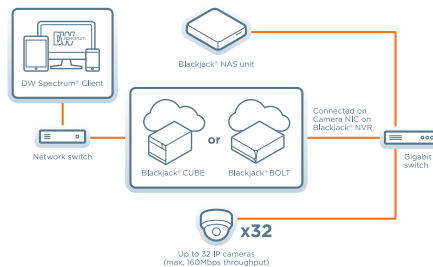


### Typical installations:

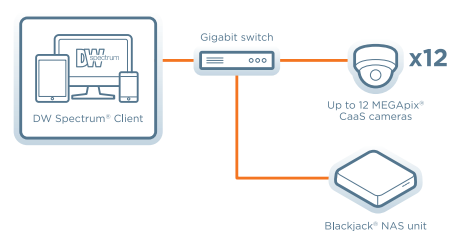
Typical rackmount NAS install into a BlackJack® network:



Typical desktop NAS install into a BlackJack® Cube™ / Bolt™ network:



Typical desktop NAS install into a MEGApix® CaaS™ network:



☎ : 866.446.3595

✉ : sales@dwcc.tv

🌐 : www.digital-watchdog.com

