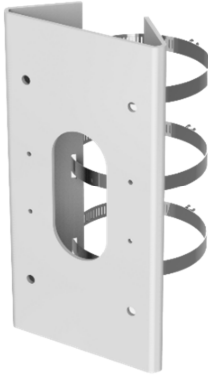


## PM1

### Vertical Pole Mount



- Stainless Steel Material with Surface Spray Treatment
- Adjustable Diameter from 67 mm to 127 mm

#### Available Models:

PM1

## Specifications

	PM1
Description	Vertical pole mount
Appearance	Hikvision white
Material	Stainless steel
Dimensions	9.84" × 5" × 1.81" (250 mm × 127 mm × 46 mm)
Weight	2.66 lb (1205 g)

- Waterproof rubber is necessary for outdoor application.
- The wall must be capable of supporting at least three times as much as the total weight of the camera and the mount.
- The mount's maximum load capacity is 22 lb (10 kg).

## Dimensions

