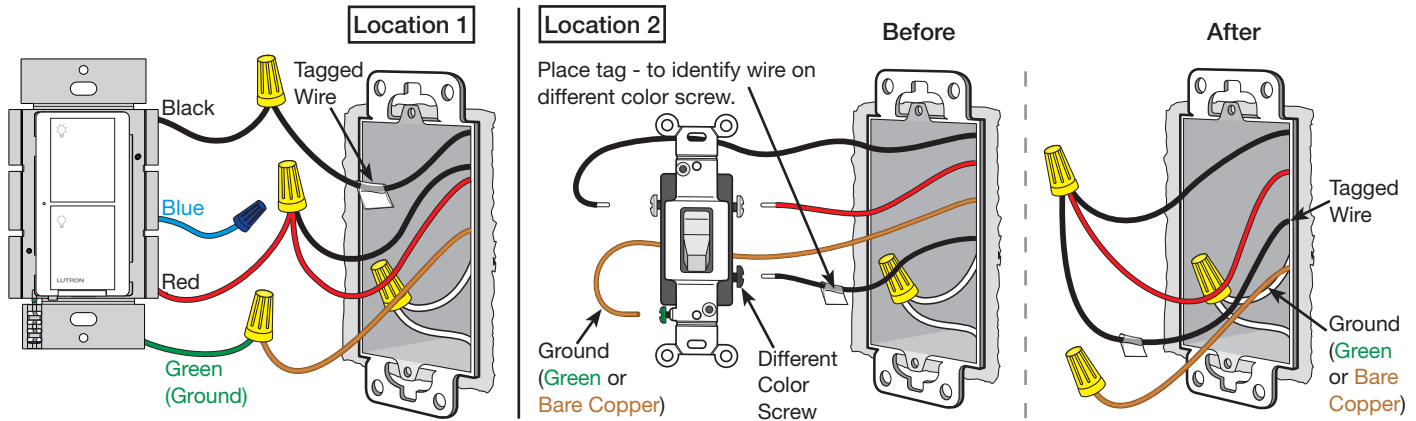


Image #85 — Caséta Switch with One Black Wire, One Red Wire, and One Blue Wire in a 3-way Application with a Pico Remote

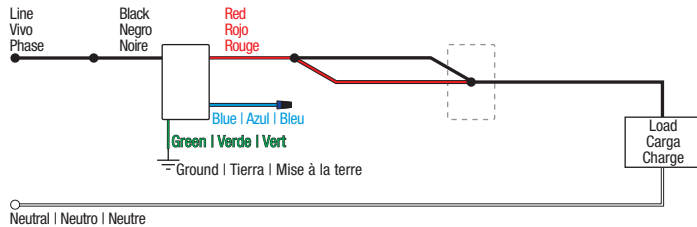


Continued on next page...

Not sure this is the correct wiring for your Lutron product?

For more information, refer to the Lutron [DIY Wiring Tool](#) or visit the [Lutron Support Center](#).

Image #85 — Caséta Switch with One Black Wire, One Red Wire, and One Blue Wire in a 3-way Application with a Pico Remote (continued)



Not sure this is the correct wiring for your Lutron product?

For more information, refer to the Lutron [DIY Wiring Tool](#) or visit the [Lutron Support Center](#).