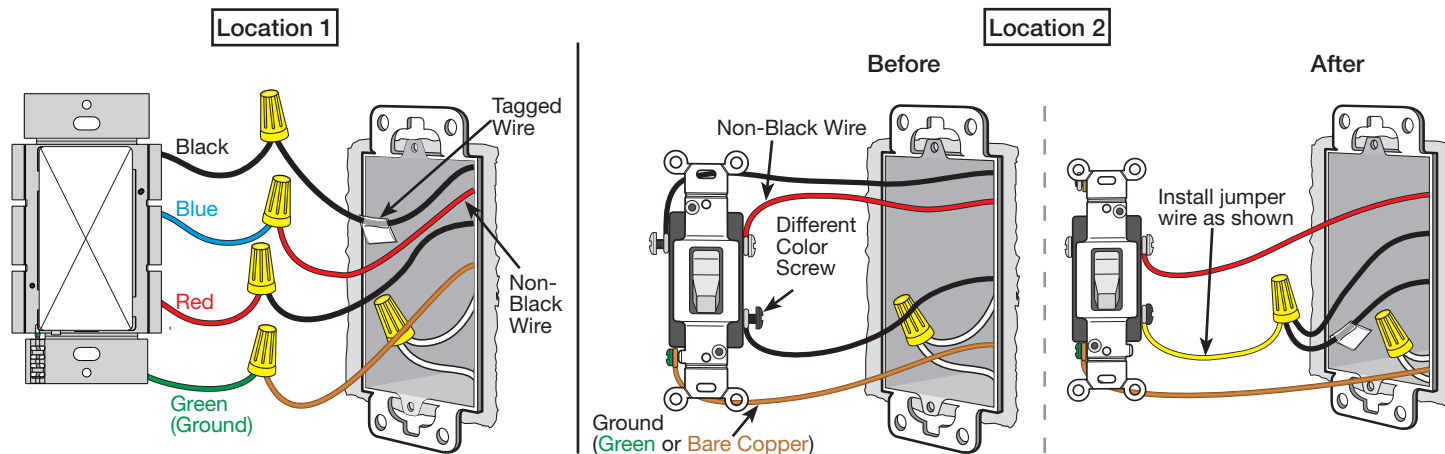


Image #81 — Control with One Black Wire, One Red Wire, and One Blue Wire in a 3-Way Application with a Mechanical Switch

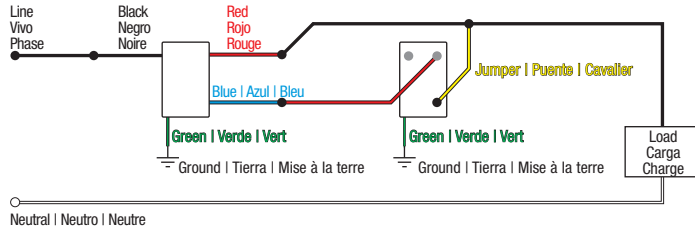


Continued on next page...

Not sure this is the correct wiring for your Lutron product?

For more information, refer to the Lutron [DIY Wiring Tool](#) or visit the [Lutron Support Center](#).

Image #81 — Control with One Black Wire, One Red Wire, and One Blue Wire in a 3-Way Application with a Mechanical Switch



Not sure this is the correct wiring for your Lutron product?

For more information, refer to the Lutron [DIY Wiring Tool](#) or visit the [Lutron Support Center](#).