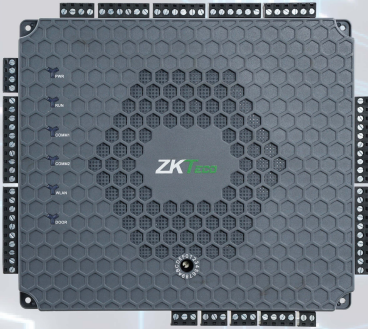


Atlas Bio Series

Access Control Panels with built-in Web Application - No software required



Atlas460

*Also available in 1 or 2 Door options



Atlas460-BUN

*Also available in 1 or 2 Door options



Atlas460-4 Door KIT

*Also available in 1 or 2 Door options

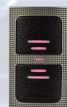
Readers & Accessories



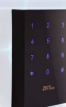
SLK20R



FR1500A



KR500E



KR702E



KR500H



KR500-BT



Prox Card



Prox-Keyfob



State-of-the-art 1, 2 and 4 door biometric access control panels with built-in Web Application eliminate the need for management software.



Advanced Access Control Features

Built-in Web Application provides advanced access control features including User Enrollment & Management, Door Control & Monitoring, Lockdown, Reporting, Maps, Anti-Passback, First-Card Opening, Multi-Card Opening, Card Design and Duress PINs.



Door Control and More

User-programmable auxiliary relays can be used to control lights, alarms, annunciators, intrusion detection panels, additional locking devices, or any other external electrical device which can be controlled by a switch.



Capacity

1 Primary panel can support up to 20 Secondary panels. Maximum 84 doors can be supported when using all 21 panels. Each Atlas Bio Series panel can store up to 5,000 users (fingerprint templates and/or cards) & 10,000 transactions plus unlimited archive downloads.



Power

Atlas Bio Series uses a 12V DC 3A power supply and also supports Power over Ethernet (PoE).



Choice of Readers

Atlas Bio Series supports ZKTeco FR1500A fingerprint readers. Atlas additionally supports any 3rd-party readers which support Wiegand or OSDP communication protocols.



Communication

Atlas Bio Series panels communicate securely over wired & wireless TCP/IP networks using SSL/TLS. Supported browsers include Google Chrome, Mozilla Firefox and Microsoft Edge.



Mobile App

Numerous convenient features include: remotely unlocking doors, universal lockdown & recovery, access to events & alarms, adding/modifying users, and much more.

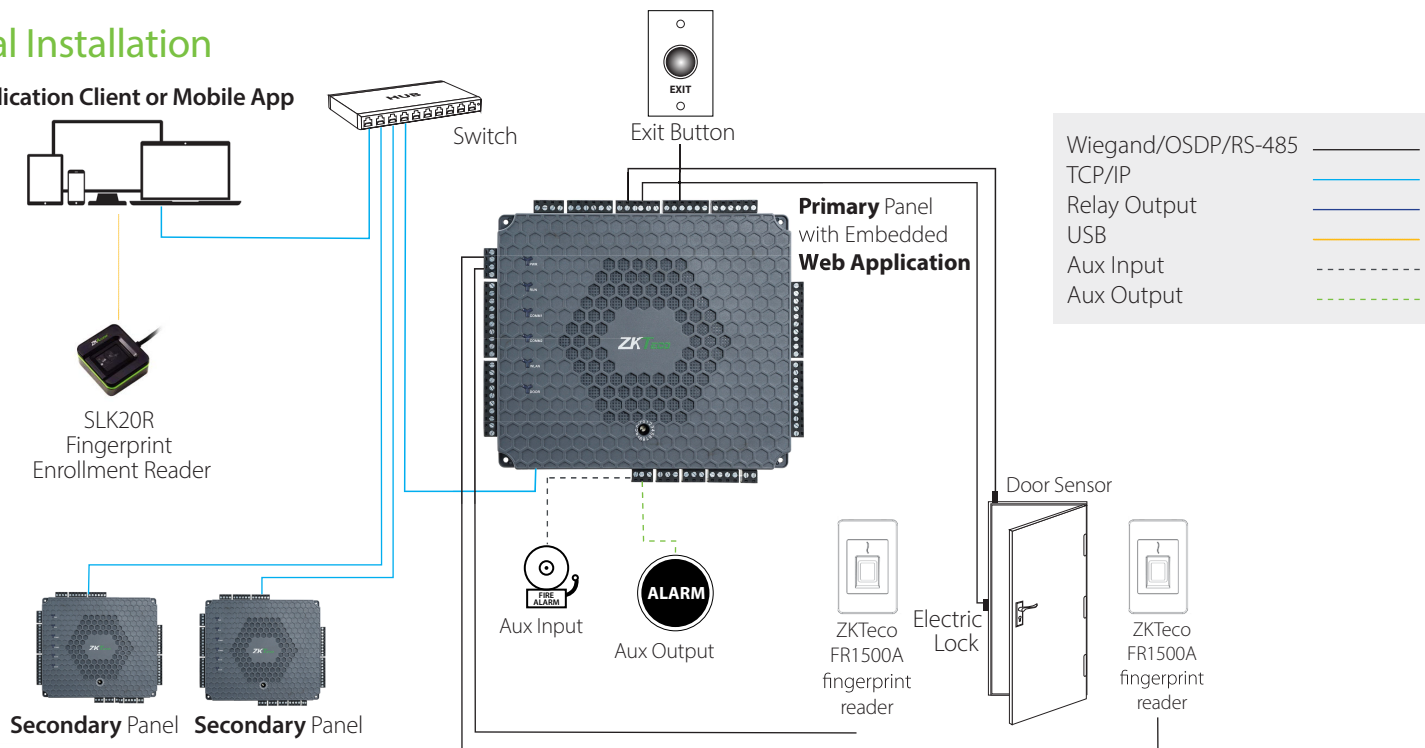


Lowest Total Cost of Ownership

Atlas Bio Series panels come in several models to suit different project needs and reduce the cost of unused capacity. Easy-to-use embedded Web Application gets you up and running quickly. Firmware is field-upgradeable, allowing your system to stay current with the latest features and security enhancements.

Typical Installation

Web Application Client or Mobile App



Number of Doors Controlled	One Door	Two Doors	Four Doors
Number of Readers Supported	2 (Wiegand or OSDP Readers) 2 (Fingerprint Readers)	4 (Wiegand or OSDP Readers) 4 (Fingerprint Readers)	4 (Wiegand or OSDP Readers) 4 (Fingerprint Readers)
Types of Readers Supported	ZKTeco FR1500A fingerprint readers and 3rd party 125kHz & 13.56MHz Wiegand, OSDP and RS-485 readers	ZKTeco FR1500A fingerprint readers and 3rd party 125kHz & 13.56MHz Wiegand, OSDP and RS-485 readers	ZKTeco FR1500A fingerprint readers and 3rd party 125kHz & 13.56MHz Wiegand, OSDP and RS-485 readers
Number of Inputs	4 (Exit Device, Door Contact and 2 Aux)	6 (2 Exit Devices, 2 Door Contacts and 2 Aux)	10 (4 Exit Devices, 4 Door Contacts and 2 Aux)
Number of Outputs	2 (1 Form C relay for lock and 1 Form C relay for Aux output)	3 (2 Form C relays for locks and 1 Form C relay for Aux output)	5 (4 Form C relays for locks and 1 Form C relay for Aux output)
User Capacity	5,000 (Fingerprint and/or card users)	5,000 (Fingerprint and/or card users)	5,000 (Fingerprint and/or card users)
Fingerprint Template Capacity	5,000 (up to 10 fingerprints per user)	5,000 (up to 10 fingerprints per user)	5,000 (up to 10 fingerprints per user)
Logs	10,000 transactions plus unlimited archive downloads	10,000 transactions plus unlimited archive downloads	10,000 transactions plus unlimited archive downloads
Weight	9 lbs (3.8 kg)	10 lbs (4.2 kg)	10 lbs (4.2 kg)
Communication	TCP/IP, Wi-Fi, Wiegand, OSDP	TCP/IP, Wi-Fi, Wiegand, OSDP	TCP/IP, Wi-Fi, Wiegand, OSDP
Browsers Supported	Chrome, Firefox, Edge	Chrome, Firefox, Edge	Chrome, Firefox, Edge
Enclosure	Powder Coated Aluminum	Powder Coated Aluminum	Powder Coated Aluminum
Mounting	Wall Mount	Wall Mount	Wall Mount
Recommended Power Supply	12V DC, 3A (PoE)	12V DC, 3A (PoE)	12V DC, 3A (PoE)
Dimensions (Bundle Only)	15 in (L) X 3.15 in (W) X 11 in (H). 380 mm(L) X 80 mm(W) X 280 mm(H)	15 in (L) X 3.15 in (W) X 11 in (H). 380 mm(L) X 80 mm(W) X 280 mm(H)	15 in (L) X 3.15 in (W) X 11 in (H). 380 mm(L) X 80 mm(W) X 280 mm(H)
Dimensions (Board Only)	6.3 in. X 5.51 in. (160 mm X 140 mm)	7.75in. X 6.73in. (197mm X 171mm)	7.75in. X 6.73in. (197mm X 171mm)

Made in Thailand



ISO 9001:2015 certified

1600 Union Hill Road Alpharetta, GA 30005 | Phone: (862) 505-2101 | Fax: (862) 204-5906 | sales@zktcouusa.com | www.zktcouusa.com

© Copyright 2019. ZKTeco Inc. ZKTeco Logo and ZKTeco USA Logo are registered trademarks of ZKTeco or a related company. All other product and company names mentioned are used for identification purposes only and may be the trademarks of their respective owners. All specifications are subject to change without notice. All rights reserved.



ATLB V1 080219