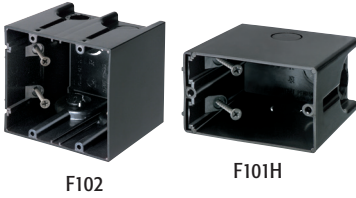


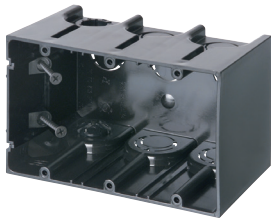
F101

F102D

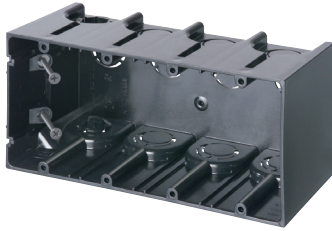


F102

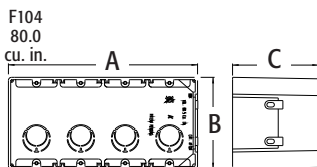
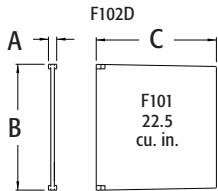
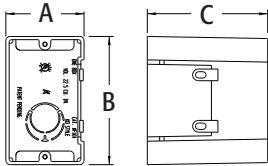
F101H



F103



F104



## ONE-BOX™ Non-Metallic Outlet Boxes

For new or retrofit construction.

CATALOG NUMBER	UPC/DCI/NAED MFG #018997	DESCRIPTION/ CU. IN.	UNIT PKG	STD PKG	DIM A	DIM B	DIM C
F101*	43626	Single-gang vert./22.0	50	50	2.280	3.740	3.510
F101H*	43634	Single-gang horiz./22.0	20	20	3.720	2.280	3.500
F102*	43640	2-Gang vert./42.1	25	25	4.110	3.740	3.510
F102D	43544	Voltage divider	25	25	.233	3.560	3.400
F103*	43641	3-Gang vert./61.2	20	20	5.930	3.740	3.510
F104*	43642	4-Gang vert./80.5	20	20	7.740	3.740	3.510



**PATENTED.**  
**MADE IN USA.**

\*Add suffix "GC" to Catalog # when ordering in Canada to include grounding clip, for example F101GC.

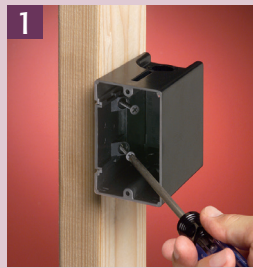
### FEATURES AND BENEFITS

- For a variety of wall thicknesses, the ONE-BOX is removable, adjustable, and re-mountable even after the wall is in place
- Angled screws inside the ONE-BOX affix it firmly to the stud
- Mounts directly to a wood or steel stud for a super secure installation
- For both power and low voltage applications with the F102D voltage divider installed
- NM cable connector supplied
- Fast and easy to install
- 2 hour fire rating

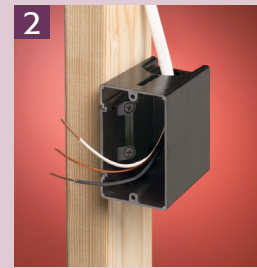


### INSTALLATION INSTRUCTIONS

#### F101 New Construction



**1** Attach ONE-BOX to wood or steel stud with captive installation screws. If the box is too far forward or back, simply back the screws out and reposition.

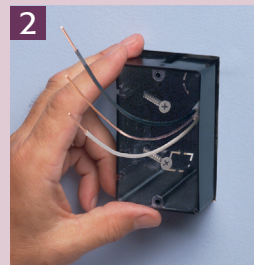


**2** Pull wire through the knockout connector. (Ships with installed NM cable connector.)

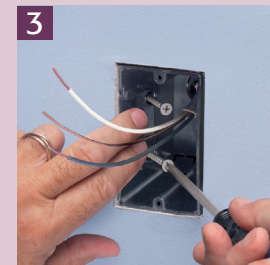
#### F101 Retrofit



**1** For old work position ONE-BOX adjacent to stud. Use box as the template to cut hole.



**2** Pull wire. Insert ONE-BOX.



**3** Mount ONE-BOX directly to stud with shipped in place screws.