

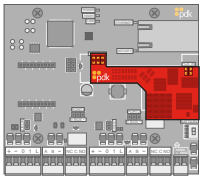
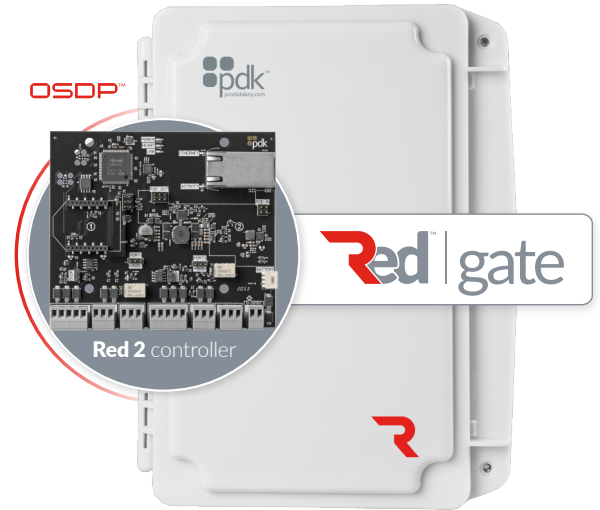
## High-Security Outdoor Controller

Built with ethernet connectivity, self-discovery, sampling IP configuration and functionality. Equipped with OSDP, an onboard power supply, and a fully-supervised power circuit that monitors input, output, battery voltage, and overall controller health. Additional plug-and-play power options are available by simply purchasing a Red PoE++ Module Kit.

## Models

Ethernet PN: **RGE**

Wireless PN: **RGW**



## Optional Module Add-On Kit

PoE++ Module | PN: **RMPOE**

## Features



### advanced**security**

ProdataKey Red™ products lead the industry in secure communication protocols. This includes OSDP, mobile, and encrypted credential communication.



### self**discoverable**

The Red Gate will be automatically discovered by the Cloud Node when an Ethernet cable is connected; it is not necessary to enter the IP address; the device is self-discoverable.



### power**monitoring**

Equipped with an on-board power supply, and a fully-supervised power circuit that monitors input, output, battery voltage, and overall controller health.



### eliminate**trenching**

Protecting access to gates and exposed areas has never been easier or more cost-effective. Because of our WiMAC™ wireless capabilities, the gate io eliminates the substantial expenses associated with trenching.



### plug'n'play**connectivity**

All PDK Red devices were designed to be plug n' play. That means they're easy to install right out of the box. It's simple to add any device no matter how large the job is.



### system**scalability**

Whether you need two doors or a thousand, the PDK Red Gate Controller gives you the flexibility to add more doors anytime, anywhere, on any device.

## Specifications

### Connections

Removable Screw-down Terminals  
Built-in Power Supply  
Industrial-grade 2A Form-C Relays (2)  
Reader Input (2)  
Input A (2)  
Input B (2)

### Communication Options

Ethernet  
WiMAC™ Wireless (2.4 GHz/ 802.15.4)  
PoE++  
Encryption: AES 128bit  
Wireless Range: 1 Mile LoS, 450ft indoor average

### Environmental

Temperature: -20° ~ +60° F / -4° ~ +140° F  
Humidity: 0 - 95% relative humidity non-condensing

### Enclosure

Dimensions (W x H x D) 7" x 9.25" x 2.25"  
Polycarbonate lockable security enclosure  
NEMA 4X UL-rated enclosure

### Optional Parts

Pole Mount Kit (PMK)

### Weight

RGE/RGW - 1.31 lbs (21oz)

### Manufacturer's Limited Warranty

One to five-year warranty against defects in materials and workmanship. For full details, visit [www.prodatakey.com/warranty](http://www.prodatakey.com/warranty)

## Requirements

### Power

12V-24V DC Input  
Powers readers and other door hardware directly from the bus.  
Operating Amperage: 35mA (Continuous amperage draw when idle)  
Recommended 12v 1.2Ah backup battery (sold separately).

**NOTE:** PDK recommends using a regulated power supply that outputs no greater than 24 volts as measured with a multimeter.