 Search

Articles in this section



Touch io Reader Quick Start Guide

3 years ago · Updated



If you need to access the [Touch io Reader](#) Documentation.



1. Package Contents



① Touch io™ reader



② Clear bracket



③ Patch antenna



④ Antenna cover



⑤ Foam tape (precut)



⑥ Bottom mount screw (1)



⑦ Wall screws (2)



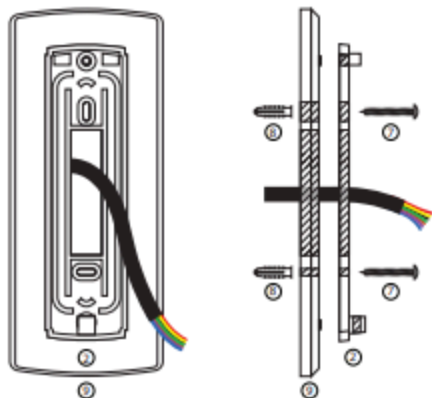
⑧ Wall anchors (2)



⑨ Backplate

2. Mounting

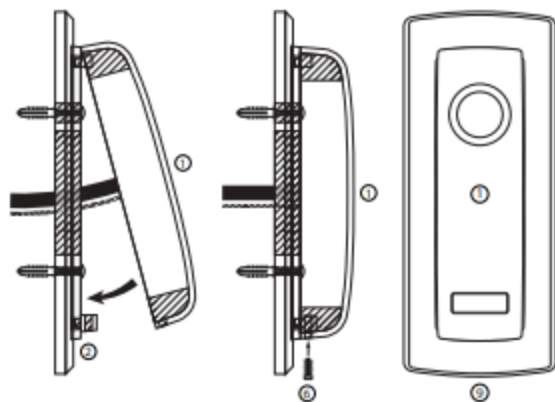
STEP 1: Mount the backplate (if applicable) & clear bracket



Draw pigtail wiring through (9) backplate (if applicable) & (2) clear bracket, and mount using (8) wall anchors and (7) screws

STEP 2: Wire the reader before proceeding (see section 3. Wiring)

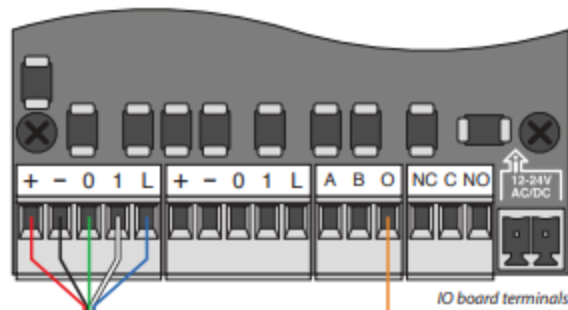
STEP 3: Mount the touch io™ reader



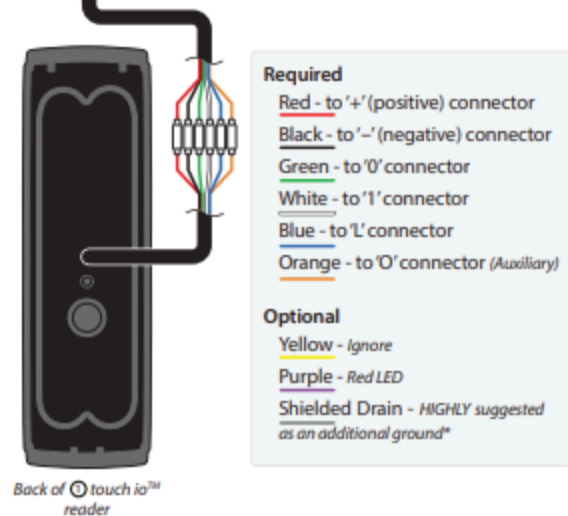
Place the (1) touch io™ reader on the (2) clear bracket and secure in place with the (6) bottom mount screw

3. Wiring

IMPORTANT: The clear bracket and single-gang backplate (if applicable), must be mounted before wiring (see section 2. Mounting)



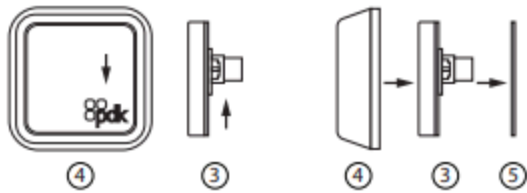
Wire the touch io™ according to the following diagram. For more detailed wiring instructions, please review the user manual at <http://support.pdk.io/documentation/>



*Shielding is needed to combat the effects of electromagnetic interference (EMI). Without shielding, cables can be a main source for transfer of EMI, both as a source and receiver.

4. Inside-Out Technology

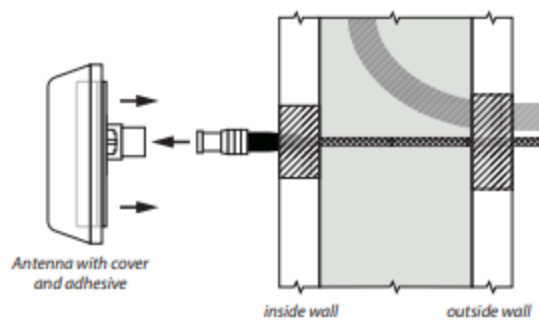
STEP 1: Assemble the patch antenna



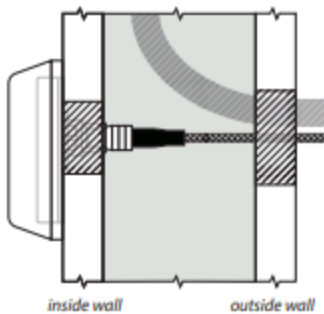
Ensure proper orientation of ④ antenna cover with pdk logo facing upright as shown. ③ Patch antenna connector should be upright.

Antenna assembly should be as follows: Place ④ antenna cover over ③ patch antenna with ⑤ foam tape placed on back of ③ patch antenna.

STEP 2: Run MCX cable through the wall and snap connector to antenna



STEP 3: Press adhesive back of antenna assembly onto the wall and into place



5. Connecting To The App



You will add the new touch io reader using your mobile device from your admin profile in pdk.io.

Follow these quick start steps to connect the reader to the system.*

**For more detailed instructions, see the touch io™ User Manual at <http://support.pdk.io/documentation/>*



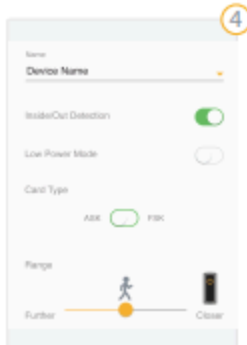
From the home screen, tap **Configuration**



Tap "+" to add a new door.



When prompted, touch your device to the touch io™ reader.



Your touch io™ is now connected. Enter device settings.

Touch io Reader Configuration



KB Touch io Reader Config



Was this article helpful?

Yes

No

10 out of 19 found this helpful

Return to top ^

Recently viewed articles

[Red Reader | Single-Gang & Keypad User Manual](#)

[Red Reader | Mullion Reader User Manual](#)

[PDK io - Partitions](#)

[States - Doors and Devices View](#)

[Access Rules](#)

Comments



0 comments

Please sign in to leave a comment.

ProdataKey, Inc.

